

**[KO Validated] NSDHL Rabbit Polyclonal
Antibody
CAB16893**



Product Information

Size:

20uL, 50uL, 100uL, 200uL

Observed MW:

Refer to figures

Calculated MW:

41kDa

Applications:

WB IHC IF

Reactivity:

Human, Mouse, Rat

Protein Background

The protein encoded by this gene is localized in the endoplasmic reticulum and is involved in cholesterol biosynthesis. Mutations in this gene are associated with CHILD syndrome, which is a X-linked dominant disorder of lipid metabolism with disturbed cholesterol biosynthesis, and typically lethal in males. Alternatively spliced transcript variants with differing 5' UTR have been found for this gene.

Immunogen information

Gene ID:

50814

Uniprot

Q15738

Synonyms:

NSDHL; H105E3; SDR31E1; XAP104

Antibody Information

Recommended dilutions:

WB 1:500 - 1:2000 IHC 1:50
- 1:200 IF 1:50 - 1:200

Source:

Rabbit

Isotype:

IgG

Purification:

Affinity purification

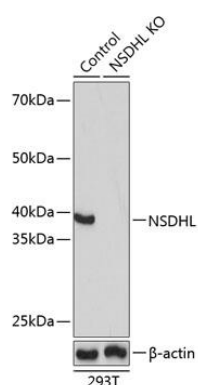
Immunogen:

Recombinant fusion protein containing a sequence corresponding to amino acids 1-240 of human NSDHL (NP_057006.1).

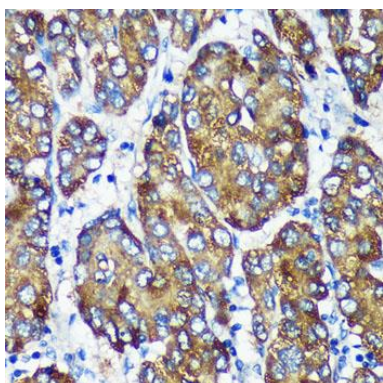
Storage:

Store at -20°C. Avoid freeze / thaw cycles. Buffer: PBS with 0.02% sodium azide, 50% glycerol, pH7.3.

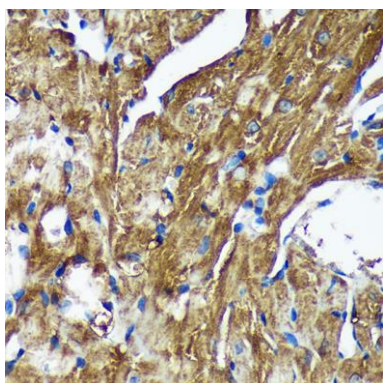
Product Images



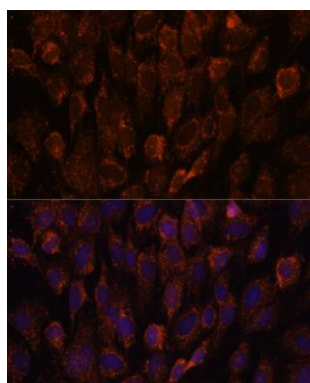
Western blot analysis of extracts from normal (control) and NSDHL knockout (KO) 293T cells, using NSDHL antibody (CAB16893) at 1:1000 dilution. Secondary antibody: HRP Goat Anti-Rabbit IgG (H+L) (CABS014) at 1:10000 dilution. Lysates/proteins: 25ug per lane. Blocking buffer: 3% nonfat dry milk in TBST. Detection: ECL Basic Kit (CABM00020). Exposure time: 1s.



Immunohistochemistry of paraffin-embedded Human liver cancer using [KO Validated] NSDHL Rabbit pAb (CAB16893) at dilution of 1:100 (40x lens).



Immunohistochemistry of paraffin-embedded Mouse heart using [KO Validated] NSDHL Rabbit pAb (CAB16893) at dilution of 1:100 (40x lens).



Immunofluorescence analysis of C6 cells using NSDHL antibody (CAB16893) at dilution of 1:100. Blue: DAPI for nuclear staining.