

# LAMP1 Rabbit Polyclonal Antibody



CAB16894

---

## Product Information

### Size:

20uL, 50uL, 100uL, 200uL

### Observed MW:

42kDa/120kDa

### Calculated MW:

38kDa/44kDa

### Applications:

WB IHC IF

### Reactivity:

Human, Mouse, Rat

## Protein Background

The protein encoded by this gene is a member of a family of membrane glycoproteins. This glycoprotein provides selectins with carbohydrate ligands. It may also play a role in tumor cell metastasis.

## Immunogen information

### Gene ID:

3916

### Uniprot

P11279

### Synonyms:

LAMP1; CD107a; LAMPA; LGP120

## Antibody Information

### Recommended dilutions:

WB 1:500 - 1:2000 IHC 1:50  
- 1:200 IF 1:50 - 1:200

### Source:

Rabbit

### Isotype:

IgG

### Purification:

Affinity purification

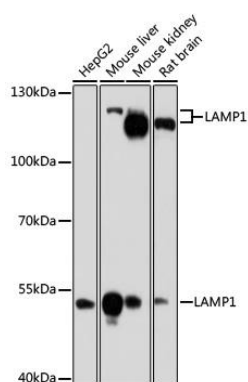
### Immunogen:

Recombinant protein of human LAMP1.

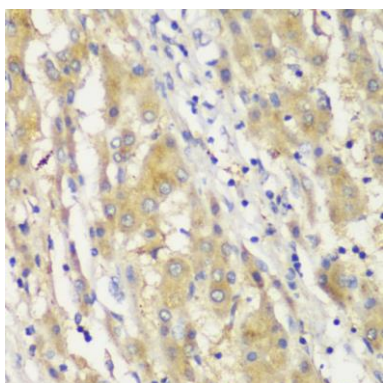
### Storage:

Store at -20°C. Avoid freeze / thaw cycles. Buffer: PBS with 0.02% sodium azide, 50% glycerol, pH7.3.

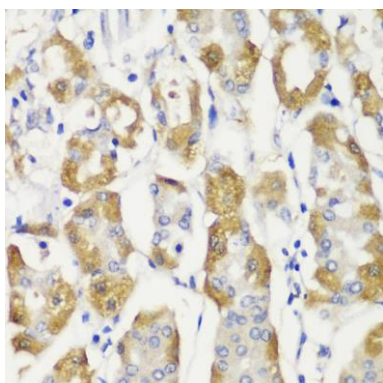
## Product Images



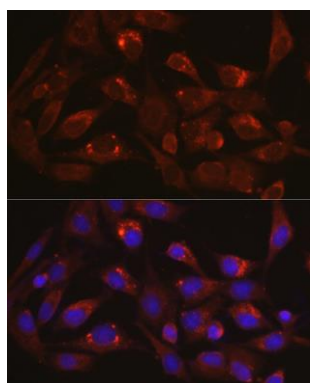
Western blot analysis of extracts of various cell lines, using LAMP1 antibody (CAB16894) at 1:1000 dilution. Secondary antibody: HRP Goat Anti-Rabbit IgG (H+L) (CABS014) at 1:10000 dilution. Lysates/proteins: 25ug per lane. Blocking buffer: 3% nonfat dry milk in TBST. Detection: ECL Basic Kit (CABM00020). Exposure time: 90s.



Immunohistochemistry of paraffin-embedded human liver cancer using LAMP1 antibody (CAB16894) at dilution of 1:200 (40x lens).



Immunohistochemistry of paraffin-embedded human gastric cancer using LAMP1 antibody (CAB16894) at dilution of 1:200 (40x lens).



Immunofluorescence analysis of BALA-3T3 cells using LAMP1 Rabbit pAb (CAB16894) at dilution of 1:100 (40x lens). Blue: DAPI for nuclear staining.