

LAMP1 Rabbit Polyclonal Antibody



CAB16895

Product Information

Size:

20uL, 50uL, 100uL, 200uL

Observed MW:

120KDa

Calculated MW:

38kDa/44kDa

Applications:

WB IF

Reactivity:

Human, Mouse, Rat

Protein Background

The protein encoded by this gene is a member of a family of membrane glycoproteins. This glycoprotein provides selectins with carbohydrate ligands. It may also play a role in tumor cell metastasis.

Immunogen information

Gene ID:

3916

Uniprot

P11279

Synonyms:

LAMP1; CD107a; LAMPA; LGP120

Antibody Information

Recommended dilutions:

WB 1:500 - 1:2000 IF 1:50 - 1:200

Source:

Rabbit

Isotype:

IgG

Purification:

Affinity purification

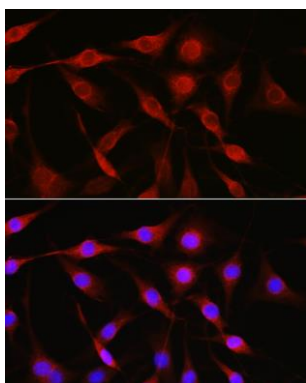
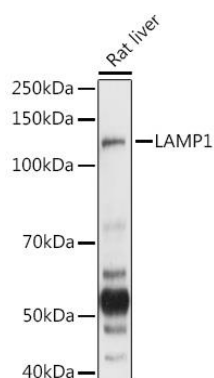
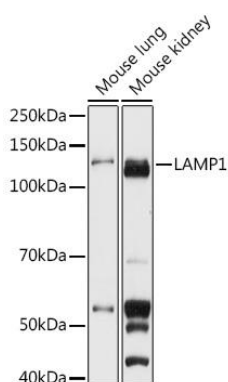
Immunogen:

Recombinant protein of human LAMP1.

Storage:

Store at -20°C. Avoid freeze / thaw cycles. Buffer: PBS with 0.02% sodium azide, 50% glycerol, pH7.3.

Product Images



Western blot analysis of extracts of various cell lines, using LAMP1 antibody (CAB16895) at 1:1000 dilution. Secondary antibody: HRP Goat Anti-Rabbit IgG (H+L) (CABS014) at 1:10000 dilution. Lysates/proteins: 25ug per lane. Blocking buffer: 3% nonfat dry milk in TBST. Detection: ECL Basic Kit (CABM00020). Exposure time: 30s.

Western blot analysis of extracts of Rat liver, using LAMP1 antibody (CAB16895) at 1:1000 dilution. Secondary antibody: HRP Goat Anti-Rabbit IgG (H+L) (CABS014) at 1:10000 dilution. Lysates/proteins: 25ug per lane. Blocking buffer: 3% nonfat dry milk in TBST. Detection: ECL Basic Kit (CABM00020). Exposure time: 90s.

Immunofluorescence analysis of NIH-3T3 cells using LAMP1 Rabbit pAb (CAB16895) at dilution of 1:100 (40x lens). Blue: DAPI for nuclear staining.