

EWSR1 Rabbit Polyclonal Antibody



CAB1690

Product Information

Size:

20uL, 50uL, 100uL, 200uL

Observed MW:

75kDa

Calculated MW:

37kDa/61kDa/62kDa/68kDa

Applications:

WB IF

Reactivity:

Human

Antibody Information

Recommended dilutions:

WB 1:500 - 1:2000 IF 1:50 - 1:100

Source:

Rabbit

Isotype:

IgG

Purification:

Affinity purification

Protein Background

This gene encodes a multifunctional protein that is involved in various cellular processes, including gene expression, cell signaling, and RNA processing and transport. The protein includes an N-terminal transcriptional activation domain and a C-terminal RNA-binding domain. Chromosomal translocations between this gene and various genes encoding transcription factors result in the production of chimeric proteins that are involved in tumorigenesis. These chimeric proteins usually consist of the N-terminal transcriptional activation domain of this protein fused to the C-terminal DNA-binding domain of the transcription factor protein. Mutations in this gene, specifically a t(11;22)(q24;q12) translocation, are known to cause Ewing sarcoma as well as neuroectodermal and various other tumors. Alternative splicing of this gene results in multiple transcript variants. Related pseudogenes have been identified on chromosomes 1 and 14.

Immunogen information

Gene ID:

2130

Uniprot

Q01844

Synonyms:

EWSR1; EWS; EWS-FLI1; bK984G1.4

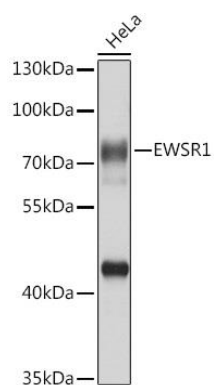
Immunogen:

Recombinant fusion protein containing a sequence corresponding to amino acids 100-300 of human EWSR1 (NP_001156757.1).

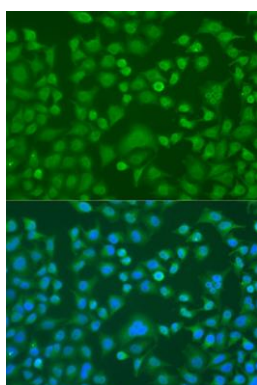
Storage:

Store at -20°C. Avoid freeze / thaw cycles. Buffer: PBS with 0.02% sodium azide, 50% glycerol, pH7.3.

Product Images



Western blot analysis of extracts of HeLa cells, using EWSR1 antibody (CAB1690) at 1:1000 dilution. Secondary antibody: HRP Goat Anti-Rabbit IgG (H+L) (CABS014) at 1:10000 dilution. Lysates/proteins: 25ug per lane. Blocking buffer: 3% nonfat dry milk in TBST. Detection: ECL Basic Kit (CABM00020). Exposure time: 1s.



Immunofluorescence analysis of U2OS cells using EWSR1 antibody (CAB1690) at dilution of 1:100. Blue: DAPI for nuclear staining.