

IRS1 Rabbit Polyclonal Antibody



CAB16902

Product Information

Size:

20uL, 50uL, 100uL, 200uL

Observed MW:

180kDa

Calculated MW:

131kDa/180kDa

Applications:

WB IHC IF

Reactivity:

Human, Mouse, Rat

Protein Background

This gene encodes a protein which is phosphorylated by insulin receptor tyrosine kinase. Mutations in this gene are associated with type II diabetes and susceptibility to insulin resistance.

Immunogen information

Gene ID:

3667

Uniprot

P35568

Synonyms:

HIRS-1; IRS1

Antibody Information

Recommended dilutions:

WB 1:500 - 1:2000 IHC 1:50
- 1:100 IF 1:50 - 1:100

Source:

Rabbit

Isotype:

IgG

Purification:

Affinity purification

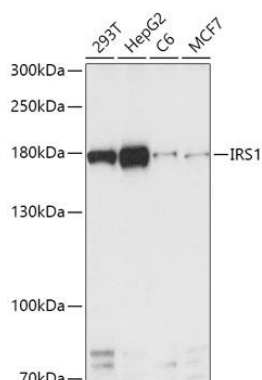
Immunogen:

Recombinant protein of human IRS1.

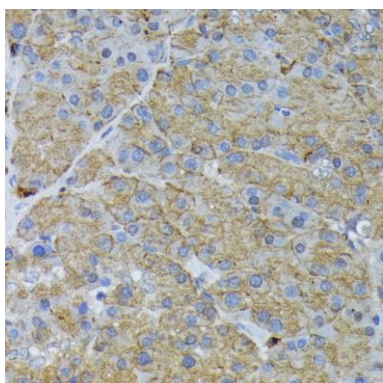
Storage:

Store at -20°C. Avoid freeze / thaw cycles. Buffer: PBS with 0.02% sodium azide, 50% glycerol, pH7.3.

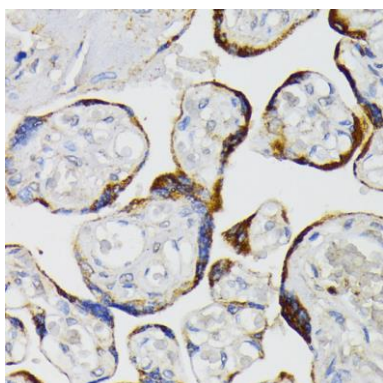
Product Images



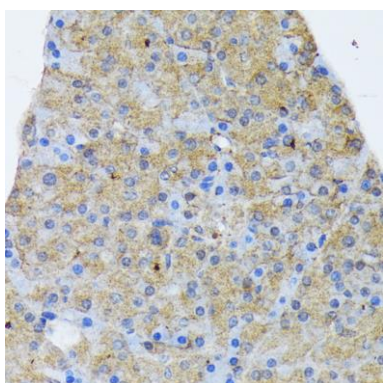
Western blot analysis of extracts of various cell lines, using IRS1 antibody (CAB16902) at 1:1000 dilution. Secondary antibody: HRP Goat Anti-Rabbit IgG (H+L) (CABS014) at 1:10000 dilution. Lysates/proteins: 25ug per lane. Blocking buffer: 3% nonfat dry milk in TBST. Detection: ECL Basic Kit (CABM00020). Exposure time: 5s.



Immunohistochemistry of paraffin-embedded rat pancreas using IRS1 antibody (CAB16902) at dilution of 1:200 (40x lens).



Immunohistochemistry of paraffin-embedded human placenta using IRS1 antibody (CAB16902) at dilution of 1:200 (40x lens).



Immunohistochemistry of paraffin-embedded mouse pancreas using IRS1 antibody (CAB16902) at dilution of 1:200 (40x lens).