

# JUN Rabbit Polyclonal Antibody



CAB16905

---

## Product Information

### Size:

20uL, 50uL, 100uL, 200uL

### Observed MW:

36kDa

### Calculated MW:

35kDa

### Applications:

WB

### Reactivity:

Human, Mouse, Rat

## Protein Background

This gene is the putative transforming gene of avian sarcoma virus 17. It encodes a protein which is highly similar to the viral protein, and which interacts directly with specific target DNA sequences to regulate gene expression. This gene is intronless and is mapped to 1p32-p31, a chromosomal region involved in both translocations and deletions in human malignancies.

## Immunogen information

### Gene ID:

3725

### Uniprot

P05412

### Synonyms:

AP-1; AP1; c-Jun; JUN; c

## Antibody Information

### Recommended dilutions:

WB 1:500 - 1:2000

### Source:

Rabbit

### Isotype:

IgG

### Purification:

Affinity purification

### Immunogen:

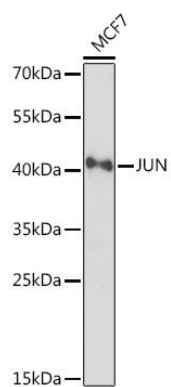
A synthetic peptide corresponding to a sequence within amino acids 150-250 of human JUN (NP\_002219.1).

### Storage:

Store at -20°C. Avoid freeze / thaw cycles. Buffer: PBS with 0.02% sodium azide, 50% glycerol, pH7.3.

## Product Images

---



Western blot - JUN Rabbit pAb (CAB16905)