

KCNA1 Rabbit Polyclonal Antibody



CAB16906

Product Information

Size:

20uL, 50uL, 100uL, 200uL

Observed MW:

Refer to figures

Calculated MW:

56kDa

Applications:

IF

Reactivity:

Mouse, Rat

Antibody Information

Recommended dilutions:

IF 1:50 - 1:200

Source:

Rabbit

Isotype:

IgG

Purification:

Affinity purification

Protein Background

This gene encodes a voltage-gated delayed potassium channel that is phylogenetically related to the *Drosophila* Shaker channel. The encoded protein has six putative transmembrane segments (S1-S6), and the loop between S5 and S6 forms the pore and contains the conserved selectivity filter motif (GYGD). The functional channel is a homotetramer. The N-terminus of the channel is associated with beta subunits that can modify the inactivation properties of the channel as well as affect expression levels. The C-terminus of the channel is complexed to a PDZ domain protein that is responsible for channel targeting. Mutations in this gene have been associated with myokymia with periodic ataxia (AEMK).

Immunogen information

Gene ID:

3736

Uniprot

Q09470

Synonyms:

KCNA1; AEMK; EA1; HBK1; HUK1; KV1.1; MBK1; MK1; RBK1

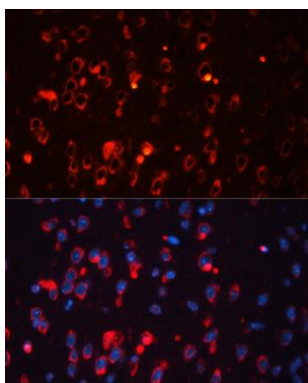
Immunogen:

Recombinant fusion protein containing a sequence corresponding to amino acids 426-495 of human KCNA1 (NP_000208.2).

Storage:

Store at -20°C. Avoid freeze / thaw cycles. Buffer: PBS with 0.02% sodium azide, 50% glycerol, pH7.3.

Product Images



Immunofluorescence - KCNA1 Polyclonal Antibody
(CAB16906)