

MAD2L1 Rabbit Polyclonal Antibody



CAB16911

Product Information

Size:

20uL, 50uL, 100uL, 200uL

Observed MW:

27kDa

Calculated MW:

10kDa/23kDa

Applications:

WB

Reactivity:

Human, Mouse, Rat

Protein Background

MAD2L1 is a component of the mitotic spindle assembly checkpoint that prevents the onset of anaphase until all chromosomes are properly aligned at the metaphase plate. MAD2L1 is related to the MAD2L2 gene located on chromosome 1. A MAD2 pseudogene has been mapped to chromosome 14.

Immunogen information

Gene ID:

4085

Uniprot

Q13257

Synonyms:

MAD2L1; HSMAD2; MAD2

Antibody Information

Recommended dilutions:

WB 1:500 - 1:2000

Source:

Rabbit

Isotype:

IgG

Purification:

Affinity purification

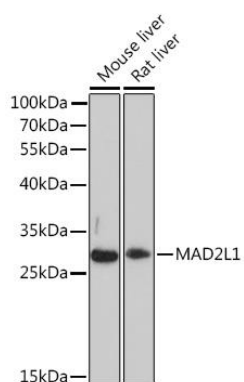
Immunogen:

Recombinant fusion protein containing a sequence corresponding to amino acids 1-205 of human MAD2L1 (NP_002349.1).

Storage:

Store at -20°C. Avoid freeze / thaw cycles. Buffer: PBS with 0.02% sodium azide, 50% glycerol, pH7.3.

Product Images



Western blot - MAD2L1 Rabbit pAb (CAB16911)