

# MCAM Rabbit Polyclonal Antibody



CAB16916

---

## Product Information

### Size:

20uL, 50uL, 100uL, 200uL

### Observed MW:

Refer to figures

### Calculated MW:

57kDa/71kDa

### Applications:

WB IHC

### Reactivity:

Human, Mouse

## Antibody Information

### Recommended dilutions:

WB 1:500 - 1:2000 IHC 1:50  
- 1:200

### Source:

Rabbit

### Isotype:

IgG

### Purification:

Affinity purification

## Protein Background

### Immunogen information

#### Gene ID:

4162

#### Uniprot

P43121

#### Synonyms:

MCAM; CD146; MUC18

#### Immunogen:

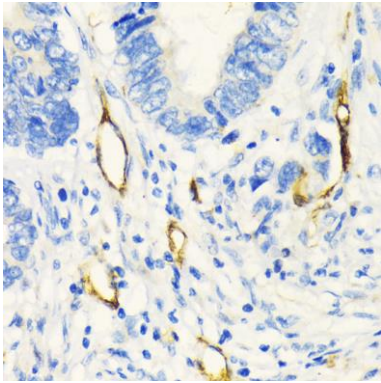
Recombinant fusion protein containing a sequence corresponding to amino acids 340-560 of human MCAM (NP\_006491.2).

#### Storage:

Store at -20°C. Avoid freeze / thaw cycles. Buffer: PBS with 0.02% sodium azide, 50% glycerol, pH7.3.

## Product Images

---



Immunohistochemistry - MCAM Rabbit pAb (CAB16916)