

**[KO Validated] MMP13 Rabbit Polyclonal  
Antibody  
CAB16920**



---

**Product Information**

**Size:**

20uL, 50uL, 100uL, 200uL

**Observed MW:**

70KDa/55KDa

**Calculated MW:**

53kDa

**Applications:**

WB IF

**Reactivity:**

Human, Mouse, Rat

**Protein Background**

This gene encodes a member of the peptidase M10 family of matrix metalloproteinases (MMPs). Proteins in this family are involved in the breakdown of extracellular matrix in normal physiological processes, such as embryonic development, reproduction, and tissue remodeling, as well as in disease processes, such as arthritis and metastasis. The encoded preproprotein is proteolytically processed to generate the mature protease. This protease cleaves type II collagen more efficiently than types I and III. It may be involved in articular cartilage turnover and cartilage pathophysiology associated with osteoarthritis. Mutations in this gene are associated with metaphyseal anadysplasia. This gene is part of a cluster of MMP genes on chromosome 11.

**Immunogen information**

**Gene ID:**

4322

**Uniprot**

P45452

**Antibody Information**

**Recommended dilutions:**

WB 1:500 - 1:2000 IF 1:50 - 1:200

**Source:**

Rabbit

**Isotype:**

IgG

**Purification:**

Affinity purification

**Synonyms:**

MMP13; CLG3; MANDP1; MDST; MMP-13

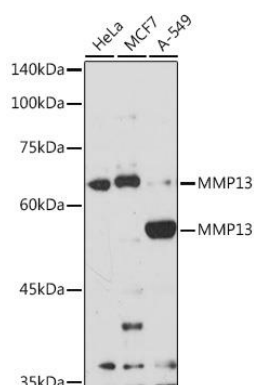
**Immunogen:**

Recombinant fusion protein containing a sequence corresponding to amino acids 262-471 of human MMP13 (NP\_002418.1).

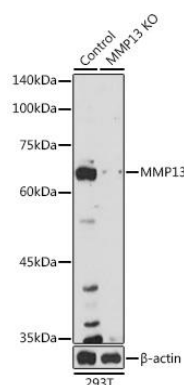
**Storage:**

Store at -20°C. Avoid freeze / thaw cycles. Buffer: PBS with 0.02% sodium azide, 50% glycerol, pH7.3.

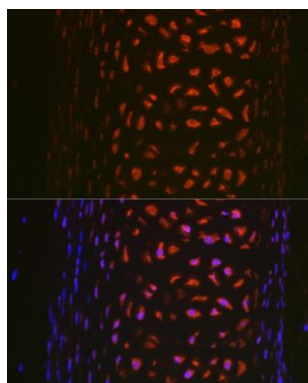
## Product Images



Western blot analysis of extracts of various cell lines, using MMP13 antibody (CAB16920) at 1:1000 dilution. Secondary antibody: HRP Goat Anti-Rabbit IgG (H+L) (CABS014) at 1:10000 dilution. Lysates/proteins: 25ug per lane. Blocking buffer: 3% nonfat dry milk in TBST. Detection: ECL Basic Kit (CABM00020). Exposure time: 180s.



Western blot analysis of extracts from normal (control) and MMP13 knockout (KO) 293T cells, using MMP13 antibody (CAB16920) at 1:1000 dilution. Secondary antibody: HRP Goat Anti-Rabbit IgG (H+L) (CABS014) at 1:10000 dilution. Lysates/proteins: 25ug per lane. Blocking buffer: 3% nonfat dry milk in TBST. Detection: ECL Basic Kit (CABM00020). Exposure time: 180s.



Immunofluorescence analysis of rat trachea using MMP13 Rabbit pAb (CAB16920) at dilution of 1:100 (40x lens). Blue: DAPI for nuclear staining.