

# MYH9 Rabbit Polyclonal Antibody



CAB16923

## Product Information

### Size:

20uL, 50uL, 100uL, 200uL

### Observed MW:

250KDa

### Calculated MW:

159kDa/226kDa

### Applications:

WB IHC IF

### Reactivity:

Human, Mouse, Rat

## Antibody Information

### Recommended dilutions:

WB 1:500 - 1:2000 IHC 1:50  
- 1:200 IF 1:50 - 1:200

### Source:

Rabbit

### Isotype:

IgG

### Purification:

Affinity purification

## Protein Background

This gene encodes a conventional non-muscle myosin; this protein should not be confused with the unconventional myosin-9a or 9b (MYO9A or MYO9B). The encoded protein is a myosin IIA heavy chain that contains an IQ domain and a myosin head-like domain which is involved in several important functions, including cytokinesis, cell motility and maintenance of cell shape. Defects in this gene have been associated with non-syndromic sensorineural deafness autosomal dominant type 17, Epstein syndrome, Alport syndrome with macrothrombocytopenia, Sebastian syndrome, Fechtner syndrome and macrothrombocytopenia with progressive sensorineural deafness.

## Immunogen information

### Gene ID:

4627

### Uniprot

P35579

### Synonyms:

MYH9; BDPLT6; DFNA17; EPSTS; FTNS; MHA; NMHC-II-A;  
NMMHC-IIA; NMMHCA; myosin-9

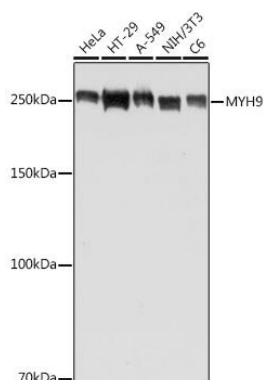
### Immunogen:

Recombinant fusion protein containing a sequence corresponding to amino acids 1711-1960 of human MYH9 (NP\_002464.1).

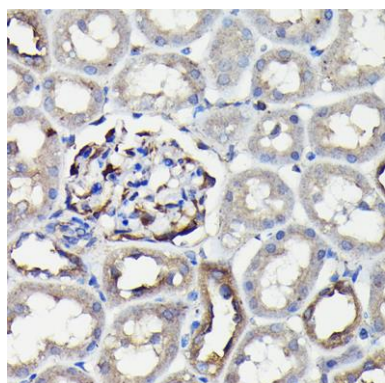
### Storage:

Store at -20°C. Avoid freeze / thaw cycles. Buffer: PBS with 0.02% sodium azide, 50% glycerol, pH7.3.

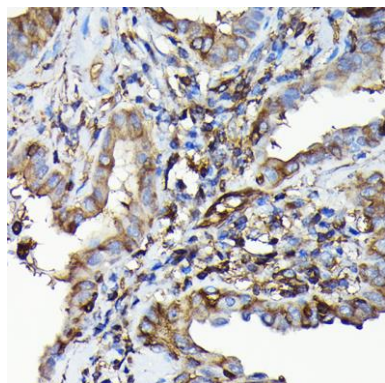
## Product Images



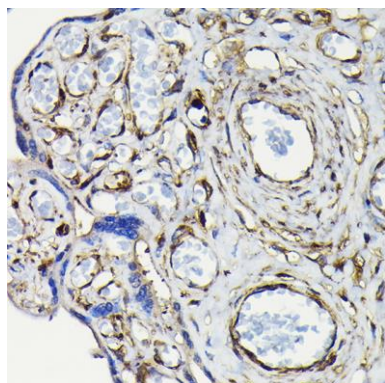
Western blot analysis of extracts of various cell lines, using MYH9 antibody (CAB16923) at 1:500 dilution. Secondary antibody: HRP Goat Anti-Rabbit IgG (H+L) (CABS014) at 1:10000 dilution. Lysates/proteins: 25ug per lane. Blocking buffer: 3% nonfat dry milk in TBST. Detection: ECL Basic Kit (CABM00020). Exposure time: 1s.



Immunohistochemistry of paraffin-embedded rat kidney using MYH9 Rabbit pAb (CAB16923) at dilution of 1:100 (40x lens).



Immunohistochemistry of paraffin-embedded human thyroid cancer using MYH9 Rabbit pAb (CAB16923) at dilution of 1:100 (40x lens).



Immunohistochemistry of paraffin-embedded human placenta using MYH9 Rabbit pAb (CAB16923) at dilution of 1:100 (40x lens).