

NPAS2 Rabbit Polyclonal Antibody



CAB16930

Product Information

Size:

20uL, 50uL, 100uL, 200uL

Observed MW:

Refer to figures

Calculated MW:

Applications:

WB IF

Reactivity:

Human, Rat

Protein Background

The protein encoded by this gene is a member of the basic helix-loop-helix (bHLH)-PAS family of transcription factors. A similar mouse protein may play a regulatory role in the acquisition of specific types of memory. It also may function as a part of a molecular clock operative in the mammalian forebrain.

Immunogen information

Gene ID:

4862

Uniprot

Q99743

Synonyms:

NPAS2; MOP4; PASD4; bHLHe9

Antibody Information

Recommended dilutions:

WB 1:500 - 1:2000 IF 1:50 - 1:100

Source:

Rabbit

Isotype:

IgG

Purification:

Affinity purification

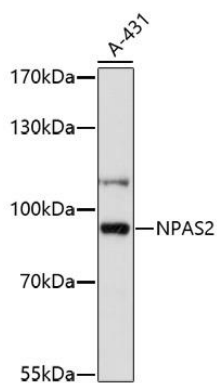
Immunogen:

A synthetic peptide of human NPAS2.

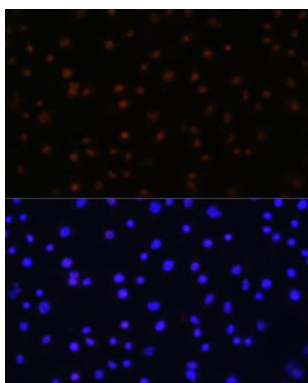
Storage:

Store at -20°C. Avoid freeze / thaw cycles. Buffer: PBS with 0.02% sodium azide, 50% glycerol, pH7.3.

Product Images



Western blot analysis of extracts of A-431 cells, using NPAS2 antibody (CAB16930) at 1:1000 dilution. Secondary antibody: HRP Goat Anti-Rabbit IgG (H+L) (CABS014) at 1:10000 dilution. Lysates/proteins: 25ug per lane. Blocking buffer: 3% nonfat dry milk in TBST. Detection: ECL Basic Kit (CABM00020). Exposure time: 90s.



Immunofluorescence analysis of C6 cells using NPAS2 Polyclonal Antibody (CAB16930) at dilution of 1:100 (40x lens). Blue: DAPI for nuclear staining.