

PCYT1A Rabbit Polyclonal Antibody



CAB16943

Product Information

Size:

20uL, 50uL, 100uL, 200uL

Observed MW:

42kDa

Calculated MW:

Applications:

WB

Reactivity:

Human, Mouse

Protein Background

This gene belongs to the cytidylyltransferase family and is involved in the regulation of phosphatidylcholine biosynthesis. Mutations in this gene are associated with spondylometaphyseal dysplasia with cone-rod dystrophy. Alternatively spliced transcript variants have been found for this gene.

Immunogen information

Gene ID:

5130

Uniprot

P49585

Synonyms:

PCYT1A; CCTA; CT; CTA; CTPCT; PCYT1; SMDCRD

Antibody Information

Recommended dilutions:

WB 1:500 - 1:2000

Source:

Rabbit

Isotype:

IgG

Purification:

Affinity purification

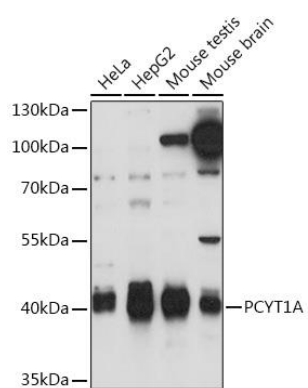
Immunogen:

A synthetic peptide corresponding to a sequence within amino acids 1-100 of human PCYT1A (NP_001299602.1).

Storage:

Store at -20°C. Avoid freeze / thaw cycles. Buffer: PBS with 0.02% sodium azide, 50% glycerol, pH7.3.

Product Images



Western blot - PCYT1A Rabbit pAb (CAB16943)