

PIK3CA Rabbit Polyclonal Antibody



CAB16950

Product Information

Size:

20uL, 50uL, 100uL, 200uL

Observed MW:

110kDa

Calculated MW:

124kDa

Applications:

WB

Reactivity:

Human

Protein Background

Phosphatidylinositol 3-kinase is composed of an 85 kDa regulatory subunit and a 110 kDa catalytic subunit. The protein encoded by this gene represents the catalytic subunit, which uses ATP to phosphorylate PtdIns, PtdIns4P and PtdIns(4, 5)P2. This gene has been found to be oncogenic and has been implicated in cervical cancers. A pseudogene of this gene has been defined on chromosome 22.

Immunogen information

Gene ID:

5290

Uniprot

P42336

Synonyms:

PIK3CA; CLOVE; CWS5; MCAP; MCM; MCMT; PI3K; PI3K-alpha

Antibody Information

Recommended dilutions:

WB 1:500 - 1:2000

Source:

Rabbit

Isotype:

IgG

Purification:

Affinity purification

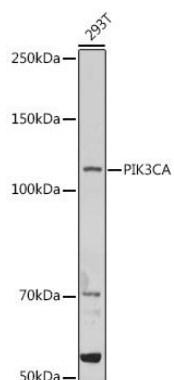
Immunogen:

A synthetic peptide of human PIK3CA.

Storage:

Store at -20°C. Avoid freeze / thaw cycles. Buffer: PBS with 0.02% sodium azide, 50% glycerol, pH7.3.

Product Images



Western blot - PIK3CA Rabbit pAb (CAB16950)