

PLCG1 Rabbit Polyclonal Antibody



CAB16953

Product Information

Size:

20uL, 50uL, 100uL, 200uL

Observed MW:

149kDa

Calculated MW:

148kDa

Applications:

WB

Reactivity:

Human, Mouse

Antibody Information

Recommended dilutions:

WB 1:500 - 1:2000

Source:

Rabbit

Isotype:

IgG

Purification:

Affinity purification

Protein Background

The protein encoded by this gene catalyzes the formation of inositol 1, 4, 5-trisphosphate and diacylglycerol from phosphatidylinositol 4, 5-bisphosphate. This reaction uses calcium as a cofactor and plays an important role in the intracellular transduction of receptor-mediated tyrosine kinase activators. For example, when activated by SRC, the encoded protein causes the Ras guanine nucleotide exchange factor RasGRP1 to translocate to the Golgi, where it activates Ras. Also, this protein has been shown to be a major substrate for heparin-binding growth factor 1 (acidic fibroblast growth factor)-activated tyrosine kinase. Two transcript variants encoding different isoforms have been found for this gene.

Immunogen information

Gene ID:

5335

Uniprot

P19174

Synonyms:

PLCG1; NCKAP3; PLC-II; PLC1; PLC148; PLCgamma1

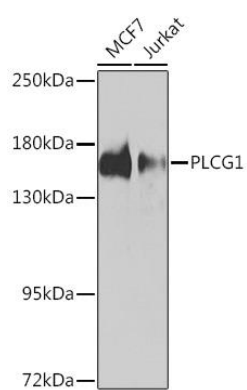
Immunogen:

A synthetic peptide of human PLCG1.

Storage:

Store at -20°C. Avoid freeze / thaw cycles. Buffer: PBS with 0.02% sodium azide, 50% glycerol, pH7.3.

Product Images



Western blot - PLCG1 Rabbit pAb (CAB16953)