

AMPKAlpha1 Rabbit Polyclonal Antibody



CAB16960

Product Information

Size:

20uL, 50uL, 100uL, 200uL

Observed MW:

64kDa

Calculated MW:

64kDa/65kDa

Applications:

WB IHC

Reactivity:

Human, Mouse, Rat

Antibody Information

Recommended dilutions:

WB 1:500 - 1:2000 IHC 1:50
- 1:200

Source:

Rabbit

Isotype:

IgG

Purification:

Affinity purification

Protein Background

The protein encoded by this gene belongs to the ser/thr protein kinase family. It is the catalytic subunit of the 5'-prime-AMP-activated protein kinase (AMPK). AMPK is a cellular energy sensor conserved in all eukaryotic cells. The kinase activity of AMPK is activated by the stimuli that increase the cellular AMP/ATP ratio. AMPK regulates the activities of a number of key metabolic enzymes through phosphorylation. It protects cells from stresses that cause ATP depletion by switching off ATP-consuming biosynthetic pathways. Alternatively spliced transcript variants encoding distinct isoforms have been observed.

Immunogen information

Gene ID:

5562

Uniprot

Q13131

Synonyms:

PRKAA1; AMPK; AMPKa1

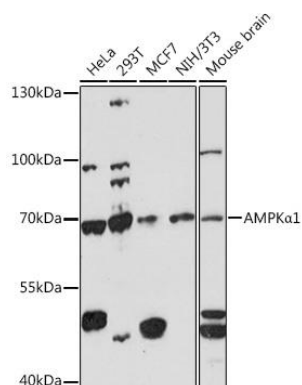
Immunogen:

A synthetic peptide of human AMPKAlpha1 alpha 1

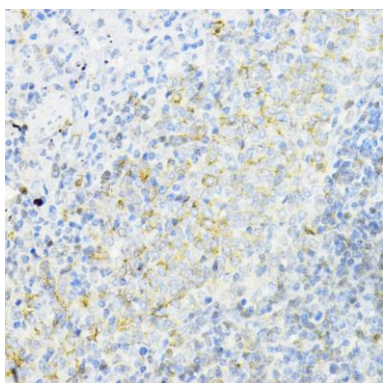
Storage:

Store at -20°C. Avoid freeze / thaw cycles. Buffer: PBS with 0.02% sodium azide, 50% glycerol, pH7.3.

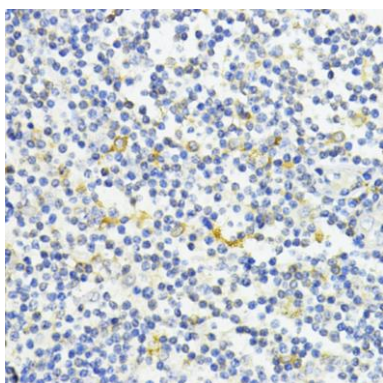
Product Images



Western blot analysis of extracts of various cell lines, using AMPK alpha 1 antibody (CAB16960) at 1:1000 dilution. Secondary antibody: HRP Goat Anti-Rabbit IgG (H+L) (CABS014) at 1:10000 dilution. Lysates/proteins: 25ug per lane. Blocking buffer: 3% nonfat dry milk in TBST. Detection: ECL Enhanced Kit (CABM00021). Exposure time: 3min.



Immunohistochemistry of paraffin-embedded rat spleen using AMPKalpha1 alpha 1 antibody (CAB16960) at dilution of 1:200 (40x lens).



Immunohistochemistry of paraffin-embedded human tonsil using AMPKα1 alpha 1 antibody (CAB16960) at dilution of 1:200 (40x lens).