

# SFSWAP Rabbit Polyclonal Antibody



CAB16973

---

## Product Information

### Size:

20uL, 50uL, 100uL, 200uL

### Observed MW:

150kDa

### Calculated MW:

### Applications:

WB

### Reactivity:

Human

## Protein Background

This gene encodes a human homolog of Drosophila splicing regulatory protein. This gene autoregulates its expression by control of splicing of its first two introns. In addition, it also regulates the splicing of fibronectin and CD45 genes. Two transcript variants encoding different isoforms have been identified.

## Immunogen information

### Gene ID:

6433

### Uniprot

Q12872

### Synonyms:

SFSWAP; SFRS8; SWAP

## Antibody Information

### Recommended dilutions:

WB 1:500 - 1:2000

### Source:

Rabbit

### Isotype:

IgG

### Purification:

Affinity purification

### Immunogen:

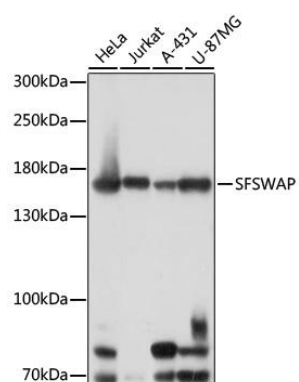
Recombinant fusion protein containing a sequence corresponding to amino acids 170-280 of human SFSWAP (NP\_004583.2).

### Storage:

Store at -20°C. Avoid freeze / thaw cycles. Buffer: PBS with 0.02% sodium azide, 50% glycerol, pH7.3.

## Product Images

---



Western blot - SFSWAP Polyclonal Antibody (CAB16973)