

# ZEB1 Rabbit Polyclonal Antibody



CAB16981

## Product Information

### Size:

20uL, 50uL, 100uL, 200uL

### Observed MW:

180kDa

### Calculated MW:

116kDa/122kDa/124kDa

### Applications:

WB IHC IF

### Reactivity:

Human, Mouse, Rat

## Antibody Information

### Recommended dilutions:

WB 1:500 - 1:2000 IHC 1:50  
- 1:200 IF 1:50 - 1:200

### Source:

Rabbit

### Isotype:

IgG

### Purification:

Affinity purification

## Protein Background

This gene encodes a zinc finger transcription factor. The encoded protein likely plays a role in transcriptional repression of interleukin 2. Mutations in this gene have been associated with posterior polymorphous corneal dystrophy-3 and late-onset Fuchs endothelial corneal dystrophy. Alternatively spliced transcript variants encoding different isoforms have been described.

## Immunogen information

### Gene ID:

6935

### Uniprot

P37275

### Synonyms:

ZEB1; AREB6; BZP; DELTAEF1; FECD6; NIL2A; PPCD3; TCF8; ZFHEP;  
ZFHX1A

### Immunogen:

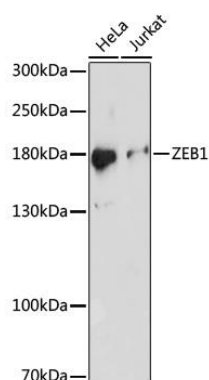
A synthetic peptide of human ZEB1.

### Storage:

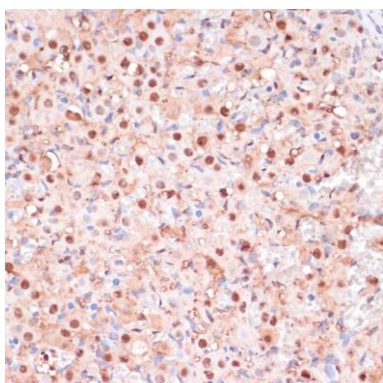
Store at -20°C. Avoid freeze / thaw cycles. Buffer: PBS with 0.02% sodium azide, 50% glycerol, pH7.3.

## Product Images

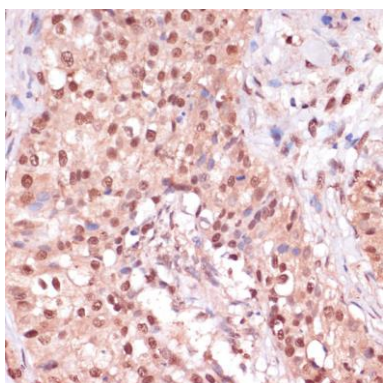
---



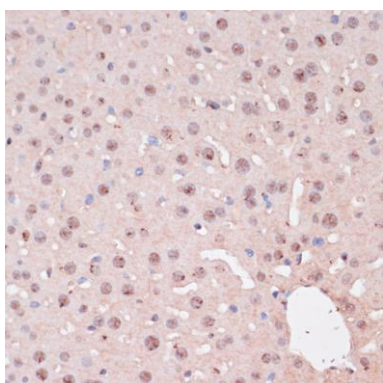
Western blot analysis of extracts of various cells, using ZEB1 antibody (CAB16981) at 1:1000 dilution. Secondary antibody: HRP Goat Anti-Rabbit IgG (H+L) (CABS014) at 1:10000 dilution. Lysates/proteins: 25ug per lane. Blocking buffer: 3% nonfat dry milk in TBST. Detection: ECL Basic Kit (CABM00020). Exposure time: 5min.



Immunohistochemistry of paraffin-embedded rat ovary using ZEB1 antibody (CAB16981) at dilution of 1:100 (40x lens).



Immunohistochemistry of paraffin-embedded human breast cancer using ZEB1 antibody (CAB16981) at dilution of 1:100 (40x lens).



Immunohistochemistry of paraffin-embedded mouse liver using ZEB1 antibody (CAB16981) at dilution of 1:100 (40x lens).