

TOP3A Rabbit Polyclonal Antibody



CAB16987

Product Information

Size:

20uL, 50uL, 100uL, 200uL

Observed MW:

112kDa

Calculated MW:

101kDa/109kDa/112kDa

Applications:

WB

Reactivity:

Mouse

Antibody Information

Recommended dilutions:

WB 1:500 - 1:2000

Source:

Rabbit

Isotype:

IgG

Purification:

Affinity purification

Protein Background

This gene encodes a DNA topoisomerase, an enzyme that controls and alters the topologic states of DNA during transcription. This enzyme catalyzes the transient breaking and rejoining of a single strand of DNA which allows the strands to pass through one another, thus reducing the number of supercoils and altering the topology of DNA. This enzyme forms a complex with BLM which functions in the regulation of recombination in somatic cells. Alternative splicing results in multiple transcript variants encoding different isoforms.

Immunogen information

Gene ID:

7156

Uniprot

Q13472

Synonyms:

TOP3A; TOP3; ZGRF7

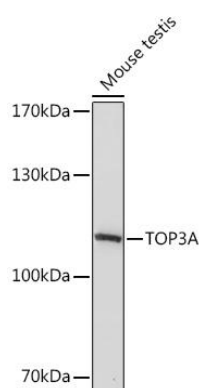
Immunogen:

A synthetic peptide corresponding to a sequence within amino acids 1-100 of human TOP3A (XP_011522303.1).

Storage:

Store at -20°C. Avoid freeze / thaw cycles. Buffer: PBS with 0.02% sodium azide, 50% glycerol, pH7.3.

Product Images



Western blot - TOP3A Rabbit pAb (CAB16987)