

# MAD2L1 Rabbit Polyclonal Antibody



CAB1699

## Product Information

### Size:

20uL, 50uL, 100uL, 200uL

### Observed MW:

24kDa

### Calculated MW:

10kDa/23kDa

### Applications:

WB IF

### Reactivity:

Human

## Protein Background

MAD2L1 is a component of the mitotic spindle assembly checkpoint that prevents the onset of anaphase until all chromosomes are properly aligned at the metaphase plate. MAD2L1 is related to the MAD2L2 gene located on chromosome 1. A MAD2 pseudogene has been mapped to chromosome 14.

## Immunogen information

### Gene ID:

4085

### Uniprot

Q13257

### Synonyms:

MAD2L1; HSMAD2; MAD2

## Antibody Information

### Recommended dilutions:

WB 1:500 - 1:2000 IF 1:50 - 1:200

### Source:

Rabbit

### Isotype:

IgG

### Purification:

Affinity purification

### Immunogen:

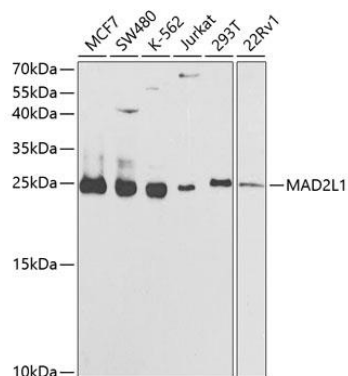
Recombinant fusion protein containing a sequence corresponding to amino acids 1-205 of human MAD2L1 (NP\_002349.1).

### Storage:

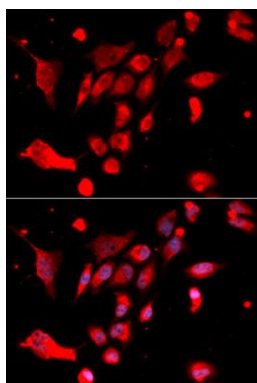
Store at -20°C. Avoid freeze / thaw cycles. Buffer: PBS with 0.02% sodium azide, 50% glycerol, pH7.3.

## Product Images

---



Western blot analysis of extracts of various cell lines, using MAD2L1 antibody (CAB1699) at 1:1000 dilution. Secondary antibody: HRP Goat Anti-Rabbit IgG (H+L) (CABS014) at 1:10000 dilution. Lysates/proteins: 25ug per lane. Blocking buffer: 3% nonfat dry milk in TBST. Detection: ECL Basic Kit (CABM00020). Exposure time: 90s.



Immunofluorescence analysis of U2OS cells using MAD2L1 antibody (CAB1699). Blue: DAPI for nuclear staining.