

SCGB1A1 Rabbit Polyclonal Antibody



CAB16998

Product Information

Size:

20uL, 50uL, 100uL, 200uL

Observed MW:

Refer to figures

Calculated MW:

9kDa

Applications:

IHC IF

Reactivity:

Mouse, Rat

Protein Background

This gene encodes a member of the secretoglobin family of small secreted proteins. The encoded protein has been implicated in numerous functions including anti-inflammation, inhibition of phospholipase A2 and the sequestering of hydrophobic ligands. Defects in this gene are associated with a susceptibility to asthma.

Immunogen information

Gene ID:

7356

Uniprot

P11684

Synonyms:

SCGB1A1; CC10; CC16; CCPBP; CCSP; UGB; UP-1; UP1

Antibody Information

Recommended dilutions:

IHC 1:50 - 1:200 IF 1:50 - 1:200

Source:

Rabbit

Isotype:

IgG

Purification:

Affinity purification

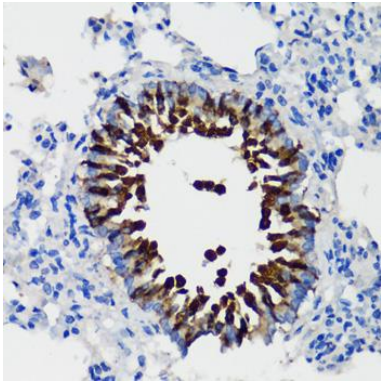
Immunogen:

Recombinant fusion protein containing a sequence corresponding to amino acids 22-91 of human SCGB1A1 (NP_003348.1).

Storage:

Store at -20°C. Avoid freeze / thaw cycles. Buffer: PBS with 0.02% sodium azide, 50% glycerol, pH7.3.

Product Images



Immunohistochemistry - SCGB1A1 Polyclonal Antibody (CAB16998)