

# VIL1 Rabbit Polyclonal Antibody



CAB17002

---

## Product Information

### Size:

20uL, 50uL, 100uL, 200uL

### Observed MW:

Refer to figures

### Calculated MW:

46kDa/92kDa

### Applications:

WB IHC

### Reactivity:

Human, Mouse

## Antibody Information

### Recommended dilutions:

WB 1:500 - 1:2000 IHC 1:50  
- 1:200

### Source:

Rabbit

### Isotype:

IgG

### Purification:

Affinity purification

## Protein Background

This gene encodes a member of a family of calcium-regulated actin-binding proteins. This protein represents a dominant part of the brush border cytoskeleton which functions in the capping, severing, and bundling of actin filaments. Two mRNAs of 2.7 kb and 3.5 kb have been observed; they result from utilization of alternate poly-adenylation signals present in the terminal exon.

## Immunogen information

### Gene ID:

7429

### Uniprot

P09327

### Synonyms:

VIL1; D2S1471; VIL; villin-1

### Immunogen:

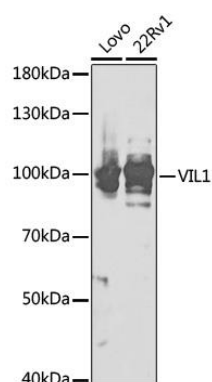
Recombinant fusion protein containing a sequence corresponding to amino acids 1-350 of human VIL1 (NP\_009058.2).

### Storage:

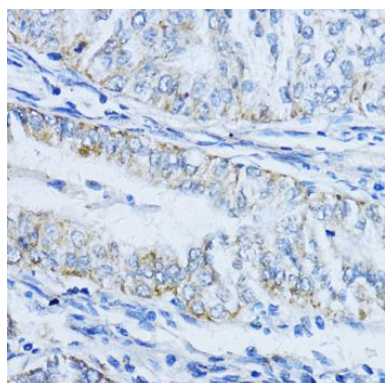
Store at -20°C. Avoid freeze / thaw cycles. Buffer: PBS with 0.02% sodium azide, 50% glycerol, pH7.3.

## Product Images

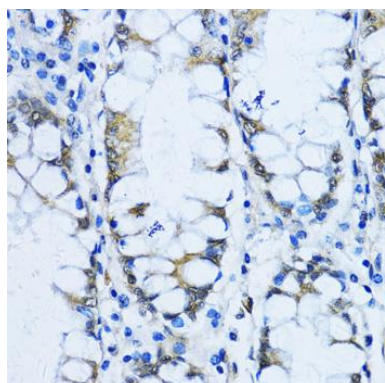
---



Western blot analysis of extracts of various cell lines, using VIL1 antibody (CAB17002) at 1:1000 dilution. Secondary antibody: HRP Goat Anti-Rabbit IgG (H+L) (CABS014) at 1:10000 dilution. Lysates/proteins: 25ug per lane. Blocking buffer: 3% nonfat dry milk in TBST. Detection: ECL Basic Kit (CABM00020).



Immunohistochemistry of paraffin-embedded human colon carcinoma using VIL1 antibody (CAB17002) at dilution of 1:100 (40x lens).



Immunohistochemistry of paraffin-embedded human stomach using VIL1 antibody (CAB17002) at dilution of 1:100 (40x lens).