

# ARHGEF5 Rabbit Polyclonal Antibody



CAB17014

---

## Product Information

### Size:

20uL, 50uL, 100uL, 200uL

### Observed MW:

Refer to figures

### Calculated MW:

60kDa/176kDa

### Applications:

IHC

### Reactivity:

Human, Mouse, Rat

## Protein Background

Rho GTPases play a fundamental role in numerous cellular processes initiated by extracellular stimuli that work through G protein coupled receptors. The encoded protein may form a complex with G proteins and stimulate Rho-dependent signals. This protein may be involved in the control of cytoskeletal organization.

## Immunogen information

### Gene ID:

7984

### Uniprot

Q12774

### Synonyms:

ARHGEF5; GEF5; P60; TIM; TIM1

## Antibody Information

### Recommended dilutions:

IHC 1:50 - 1:200

### Source:

Rabbit

### Isotype:

IgG

### Purification:

Affinity purification

### Immunogen:

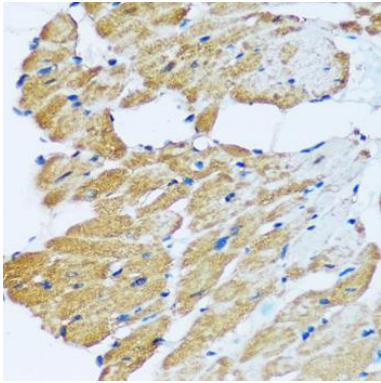
Recombinant fusion protein containing a sequence corresponding to amino acids 1248-1597 of human ARHGEF5 (NP\_005426.2).

### Storage:

Store at -20°C. Avoid freeze / thaw cycles. Buffer: PBS with 0.02% sodium azide, 50% glycerol, pH7.3.

## Product Images

---



Immunohistochemistry - ARHGEF5 Rabbit pAb (CAB17014)