

LHX3 Rabbit Polyclonal Antibody



CAB17015

Product Information

Size:

20uL, 50uL, 100uL, 200uL

Observed MW:

43kDa

Calculated MW:

Applications:

WB

Reactivity:

Human, Mouse, Rat

Antibody Information

Recommended dilutions:

WB 1:500 - 1:2000

Source:

Rabbit

Isotype:

IgG

Purification:

Affinity purification

Protein Background

This gene encodes a member of a large family of proteins which carry the LIM domain, a unique cysteine-rich zinc-binding domain. The encoded protein is a transcription factor that is required for pituitary development and motor neuron specification. Mutations in this gene cause combined pituitary hormone deficiency 3. Alternative splicing results in multiple transcript variants encoding different isoforms.

Immunogen information

Gene ID:

8022

Uniprot

Q9UBR4

Synonyms:

LHX3; CPHD3; LIM3; M2-LHX3

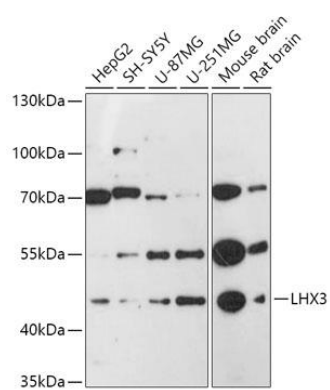
Immunogen:

A synthetic peptide corresponding to a sequence within amino acids 300 to the C-terminus of human LHX3 (NP_055379.1).

Storage:

Store at -20°C. Avoid freeze / thaw cycles. Buffer: PBS with 0.02% sodium azide, 50% glycerol, pH7.3.

Product Images



Western blot - LHX3 Polyclonal Antibody (CAB17015)