

# AXIN2 Rabbit Polyclonal Antibody



CAB17022

---

## Product Information

### Size:

20uL, 50uL, 100uL, 200uL

### Observed MW:

100kDa

### Calculated MW:

93kDa

### Applications:

WB IHC

### Reactivity:

Human, Mouse

## Protein Background

The Axin-related protein, Axin2, presumably plays an important role in the regulation of the stability of beta-catenin in the Wnt signaling pathway, like its rodent homologs, mouse conductin/rat axil. In mouse, conductin organizes a multiprotein complex of APC (adenomatous polyposis of the colon), beta-catenin, glycogen synthase kinase 3-beta, and conductin, which leads to the degradation of beta-catenin. Apparently, the deregulation of beta-catenin is an important event in the genesis of a number of malignancies. The AXIN2 gene has been mapped to 17q23-q24, a region that shows frequent loss of heterozygosity in breast cancer, neuroblastoma, and other tumors. Mutations in this gene have been associated with colorectal cancer with defective mismatch repair.

## Immunogen information

### Gene ID:

8313

### Uniprot

Q9Y2T1

## Antibody Information

### Recommended dilutions:

WB 1:500 - 1:2000 IHC 1:50  
- 1:200

### Source:

Rabbit

### Synonyms:

AXIN2; AXIL; ODCRCS; axin-2

### Immunogen:

A synthetic peptide of human AXIN2.

### Isotype:

IgG

### Storage:

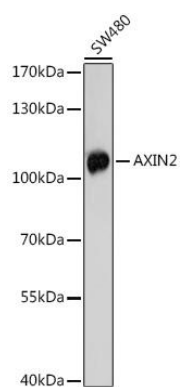
Store at -20°C. Avoid freeze / thaw cycles. Buffer: PBS with 0.02% sodium azide, 50% glycerol, pH7.3.

### Purification:

Affinity purification

## Product Images

---



Western blot - AXIN2 Rabbit pAb (CAB17022)