

CADPS Rabbit Polyclonal Antibody



CAB17026

Product Information

Size:

20uL, 50uL, 100uL, 200uL

Observed MW:

Refer to figures

Calculated MW:

50kDa/144kDa/148kDa/152kDa/153kDa

Applications:

IHC

Reactivity:

Human

Protein Background

This gene encodes a novel neural/endocrine-specific cytosolic and peripheral membrane protein required for the Ca²⁺-regulated exocytosis of secretory vesicles. The protein acts at a stage in exocytosis that follows ATP-dependent priming, which involves the essential synthesis of phosphatidylinositol 4, 5-bisphosphate (PtdIns(4, 5)P₂). Alternative splicing has been observed at this locus and three variants, encoding distinct isoforms, are described.

Immunogen information

Gene ID:

8618

Uniprot

Q9ULU8

Synonyms:

CADPS; CADPS1; CAPS; CAPS1; UNC-31

Antibody Information

Recommended dilutions:

IHC 1:50 - 1:200

Source:

Rabbit

Isotype:

IgG

Purification:

Affinity purification

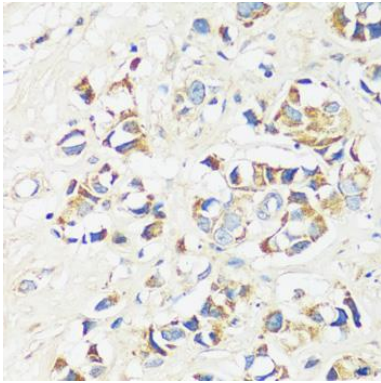
Immunogen:

Recombinant fusion protein containing a sequence corresponding to amino acids 1020-1100 of human CADPS (NP_899630.1).

Storage:

Store at -20°C. Avoid freeze / thaw cycles. Buffer: PBS with 0.02% sodium azide, 50% glycerol, pH7.3.

Product Images



Immunohistochemistry - CADPS Polyclonal Antibody (CAB17026)