

# RAB11A Rabbit Polyclonal Antibody



CAB17031

## Product Information

### Size:

20uL, 50uL, 100uL, 200uL

### Observed MW:

24kDa

### Calculated MW:

24kDa

### Applications:

WB IHC IF

### Reactivity:

Human, Mouse, Rat

## Protein Background

The protein encoded by this gene belongs to the Rab family of the small GTPase superfamily. It is associated with both constitutive and regulated secretory pathways, and may be involved in protein transport. Two transcript variants encoding different isoforms have been found for this gene.

## Immunogen information

### Gene ID:

8766

### Uniprot

P62491

### Synonyms:

RAB11A; YL8

## Antibody Information

### Recommended dilutions:

WB 1:500 - 1:2000 IHC 1:50  
- 1:100 IF 1:50 - 1:100

### Source:

Rabbit

### Isotype:

IgG

### Purification:

Affinity purification

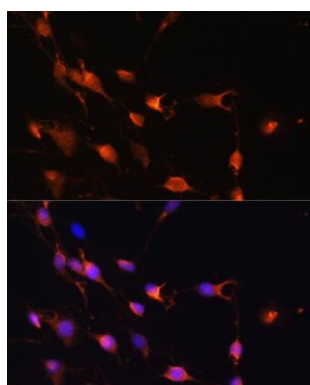
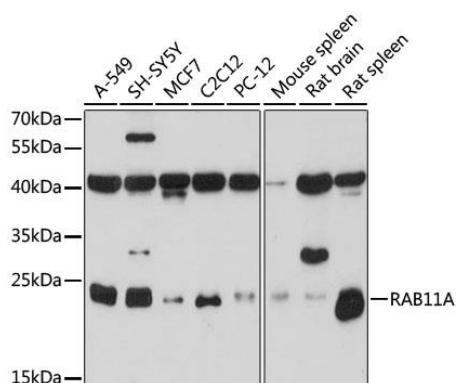
### Immunogen:

Recombinant protein of human RAB11A.

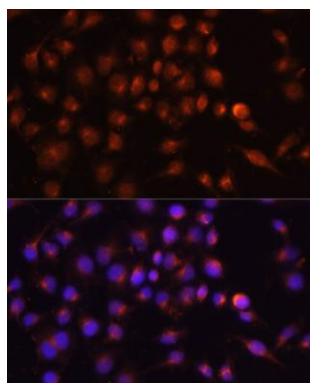
### Storage:

Store at -20°C. Avoid freeze / thaw cycles. Buffer: PBS with 0.02% sodium azide, 50% glycerol, pH7.3.

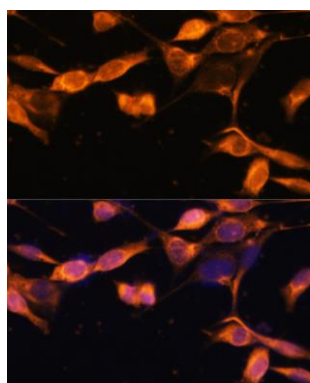
## Product Images



Immunofluorescence analysis of C6 cells using RAB11A antibody (CAB17031) at dilution of 1:100. Blue: DAPI for nuclear staining.



Immunofluorescence analysis of HeLa cells using RAB11A antibody (CAB17031) at dilution of 1:100. Blue: DAPI for nuclear staining.



Immunofluorescence analysis of NIH-3T3 cells using RAB11A antibody (CAB17031) at dilution of 1:100. Blue: DAPI for nuclear staining.