

# ATG12 Rabbit Polyclonal Antibody



CAB17045

---

## Product Information

**Size:**

20uL, 50uL, 100uL, 200uL

**Observed MW:**

55kDa

**Calculated MW:**

7kDa/15kDa

**Applications:**

WB

**Reactivity:**

Rat

## Protein Background

Autophagy is a process of bulk protein degradation in which cytoplasmic components, including organelles, are enclosed in double-membrane structures called autophagosomes and delivered to lysosomes or vacuoles for degradation. ATG12 is the human homolog of a yeast protein involved in autophagy (Mizushima et al., 1998 [PubMed 9852036]).

## Immunogen information

**Gene ID:**

9140

**Uniprot**

O94817

**Synonyms:**

ATG12; APG12; APG12L; FBR93; HAPG12; Apg12

## Antibody Information

**Recommended dilutions:**

WB 1:500 - 1:2000

**Source:**

Rabbit

**Isotype:**

IgG

**Purification:**

Affinity purification

**Immunogen:**

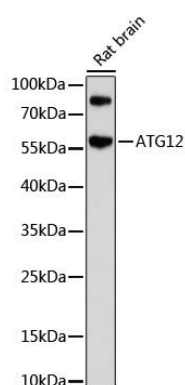
A synthetic peptide corresponding to a sequence within amino acids 1-74 of human ATG12 (NP\_001264712.1).

**Storage:**

Store at -20°C. Avoid freeze / thaw cycles. Buffer: PBS with 0.02% sodium azide, 50% glycerol, pH7.3.

## Product Images

---



Western blot analysis of extracts of rat brain, using ATG12 antibody (CAB17045) at 1:1000 dilution. Secondary antibody: HRP Goat Anti-Rabbit IgG (H+L) (CABS014) at 1:10000 dilution. Lysates/proteins: 25ug per lane. Blocking buffer: 3% nonfat dry milk in TBST. Detection: ECL Basic Kit (CABM00020). Exposure time: 90s.