

# LY86 Rabbit Polyclonal Antibody



CAB17051

---

## Product Information

### Size:

20uL, 50uL, 100uL, 200uL

### Observed MW:

18kDa

### Calculated MW:

17kDa

### Applications:

WB

### Reactivity:

Human, Mouse

## Antibody Information

### Recommended dilutions:

WB 1:500 - 1:2000

### Source:

Rabbit

### Isotype:

IgG

### Purification:

Affinity purification

## Protein Background

### Immunogen information

#### Gene ID:

9450

#### Uniprot

O95711

#### Synonyms:

LY86; MD-1; MD1; MMD-1; dJ80N2.1

#### Immunogen:

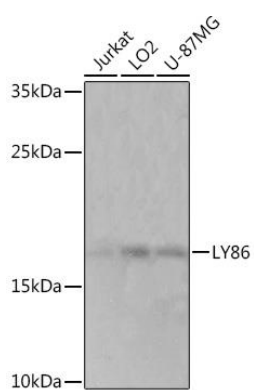
A synthetic peptide corresponding to a sequence within amino acids 50-150 of human LY86 (NP\_004262.1).

#### Storage:

Store at -20°C. Avoid freeze / thaw cycles. Buffer: PBS with 0.02% sodium azide, 50% glycerol, pH7.3.

## Product Images

---



Western blot - LY86 Rabbit pAb (CAB17051)