

TELO2 Rabbit Polyclonal Antibody



CAB17064

Product Information

Size:

20uL, 50uL, 100uL, 200uL

Observed MW:

102kDa

Calculated MW:

91kDa

Applications:

WB

Reactivity:

Human, Mouse

Antibody Information

Recommended dilutions:

WB 1:500 - 1:2000

Source:

Rabbit

Isotype:

IgG

Purification:

Affinity purification

Protein Background

This gene encodes a protein that functions as an S-phase checkpoint protein in the cell cycle. The protein may also play a role in DNA repair.

Immunogen information

Gene ID:

9894

Uniprot

Q9Y4R8

Synonyms:

TELO2; CLK2; TEL2; YHFS

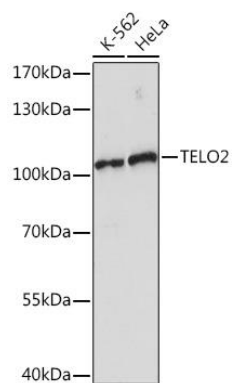
Immunogen:

A synthetic peptide corresponding to a sequence within amino acids 450-550 of human TELO2 (NP_057195.2).

Storage:

Store at -20°C. Avoid freeze / thaw cycles. Buffer: PBS with 0.02% sodium azide, 50% glycerol, pH7.3.

Product Images



Western blot - TELO2 Rabbit pAb (CAB17064)