

[KO Validated] DRP1 Rabbit Polyclonal Antibody



CAB17069

Product Information

Size:

20uL, 50uL, 100uL, 200uL

Observed MW:

82kDa

Calculated MW:

60kDa/78kDa/79kDa/80kDa/
81kDa/82kDa/83kDa

Applications:

WB IF

Reactivity:

Human, Mouse, Rat

Protein Background

This gene encodes a member of the dynamin superfamily of GTPases. The encoded protein mediates mitochondrial and peroxisomal division, and is involved in developmentally regulated apoptosis and programmed necrosis. Dysfunction of this gene is implicated in several neurological disorders, including Alzheimer's disease. Mutations in this gene are associated with the autosomal dominant disorder, encephalopathy, lethal, due to defective mitochondrial and peroxisomal fission (EMPF). Alternative splicing results in multiple transcript variants encoding different isoforms.

Immunogen information

Gene ID:

10059

Uniprot

O00429

Synonyms:

DNM1L; DLP1; DRP1; DVLP; DYMPLE; EMPF; EMPF1; HDYNIV

Antibody Information

Recommended dilutions:

WB 1:500 - 1:2000 IF 1:50 -
1:200

Source:

Rabbit

Isotype:

IgG

Purification:

Affinity purification

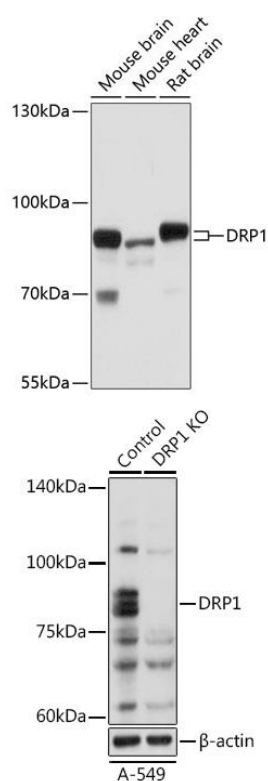
Immunogen:

Recombinant protein of human DRP1

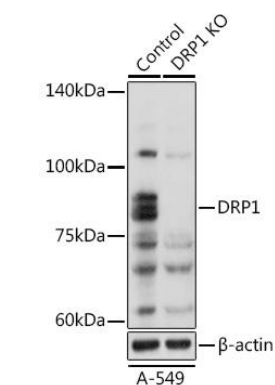
Storage:

Store at -20°C. Avoid freeze / thaw cycles. Buffer: PBS with 0.02% sodium azide, 50% glycerol, pH7.3.

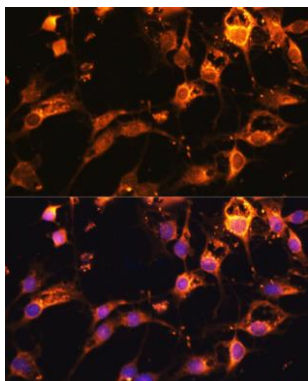
Product Images



Western blot analysis of extracts from normal (control) and DRP1 Rabbit pAb knockout (KO) A-549 cells, using DRP1 Rabbit pAb antibody (CAB17069) at 1:1000 dilution. Secondary antibody: HRP Goat Anti-Rabbit IgG (H+L) (CABS014) at 1:10000 dilution. Lysates/proteins: 25ug per lane. Blocking buffer: 3% nonfat dry milk in TBST. Detection: ECL Basic Kit (CABM00020). Exposure time: 1s.



Immunofluorescence analysis of C6 cells using DRP1 antibody (CAB17069) at dilution of 1:100. Blue: DAPI for nuclear staining.



Immunofluorescence analysis of U2OS cells using DRP1 antibody (CAB17069) at dilution of 1:100. Blue: DAPI for nuclear staining.

