

GTF2B Rabbit Polyclonal Antibody



CAB1708

Product Information

Size:

20uL, 50uL, 100uL, 200uL

Observed MW:

32KDa

Calculated MW:

34kDa

Applications:

WB IHC IF

Reactivity:

Human, Mouse, Rat

Protein Background

This gene encodes the general transcription factor IIB, one of the ubiquitous factors required for transcription initiation by RNA polymerase II. The protein localizes to the nucleus where it forms a complex (the DAB complex) with transcription factors IID and IIA. Transcription factor IIB serves as a bridge between IID, the factor which initially recognizes the promoter sequence, and RNA polymerase II.

Immunogen information

Gene ID:

2959

Uniprot

Q00403

Synonyms:

GTF2B; TF2B; TFIIB

Antibody Information

Recommended dilutions:

WB 1:500 - 1:2000 IHC 1:50
- 1:200 IF 1:50 - 1:200

Source:

Rabbit

Isotype:

IgG

Purification:

Affinity purification

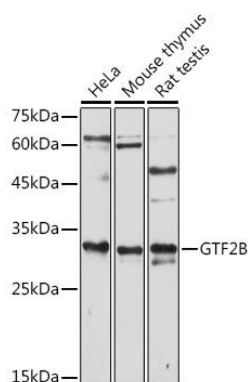
Immunogen:

A synthetic peptide corresponding to a sequence within amino acids 50-150 of human GTF2B (NP_001505.1).

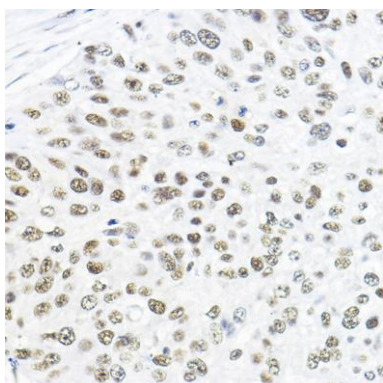
Storage:

Store at -20°C. Avoid freeze / thaw cycles. Buffer: PBS with 0.02% sodium azide, 50% glycerol, pH7.3.

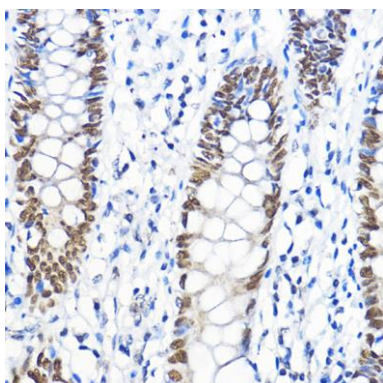
Product Images



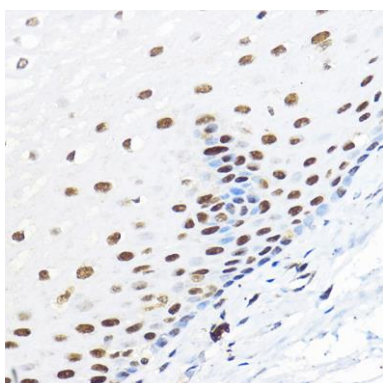
Western blot analysis of extracts of various cell lines, using GTF2B antibody (CAB1708) at 1:1000 dilution. Secondary antibody: HRP Goat Anti-Rabbit IgG (H+L) (CABS014) at 1:10000 dilution. Lysates/proteins: 25ug per lane. Blocking buffer: 3% nonfat dry milk in TBST. Detection: ECL Enhanced Kit (CABM00021). Exposure time: 180s.



Immunohistochemistry of paraffin-embedded human lung cancer using GTF2B Rabbit pAb (CAB1708) at dilution of 1:100 (40x lens).



Immunohistochemistry of paraffin-embedded human colon using GTF2B Rabbit pAb (CAB1708) at dilution of 1:100 (40x lens).



Immunohistochemistry of paraffin-embedded human esophageal using GTF2B Rabbit pAb (CAB1708) at dilution of 1:100 (40x lens).