

PGC1 alpha Rabbit Polyclonal Antibody



CAB17089

Product Information

Size:

20uL, 50uL, 100uL, 200uL

Observed MW:

110kDa

Calculated MW:

14kDa/30kDa/31kDa/33kDa/
77kDa/89kDa/91kDa

Applications:

WB

Reactivity:

Human, Mouse, Rat

Antibody Information

Recommended dilutions:

WB 1:500 - 1:2000

Source:

Rabbit

Isotype:

IgG

Purification:

Affinity purification

Protein Background

The protein encoded by this gene is a transcriptional coactivator that regulates the genes involved in energy metabolism. This protein interacts with PPARgamma, which permits the interaction of this protein with multiple transcription factors. This protein can interact with, and regulate the activities of, cAMP response element binding protein (CREB) and nuclear respiratory factors (NRFs). It provides a direct link between external physiological stimuli and the regulation of mitochondrial biogenesis, and is a major factor that regulates muscle fiber type determination. This protein may be also involved in controlling blood pressure, regulating cellular cholesterol homeostasis, and the development of obesity.

Immunogen information

Gene ID:

19017

Uniprot

O70343

Synonyms:

PPARGC1A; LEM6; PGC-1(alpha); PGC-1alpha; PGC-1v; PGC1;
PGC1A; PPARGC1; PPARG coactivator 1 alpha; PGC1 alpha;
Ppargc1a

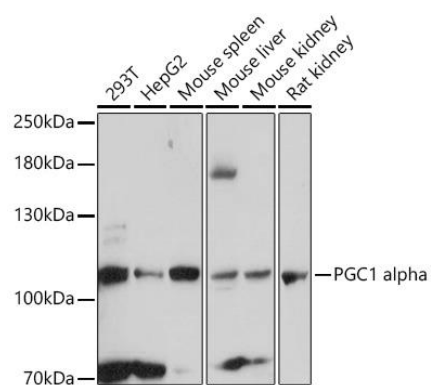
Immunogen:

Recombinant fusion protein containing a sequence corresponding to amino acids 1-300 of mouse PGC1 alpha (NP_032930.1).

Storage:

Store at -20°C. Avoid freeze / thaw cycles. Buffer: PBS with 0.02% sodium azide, 50% glycerol, pH7.3.

Product Images



Western blot analysis of extracts of various cell lines, using PGC1 alpha antibody (CAB17089) at 1:1000 dilution. Secondary antibody: HRP Goat Anti-Mouse IgG (H+L) (CABS003) at 1:10000 dilution. Lysates/proteins: 25ug per lane. Blocking buffer: 3% nonfat dry milk in TBST. Detection: ECL Basic Kit (CABM00020). Exposure time: 60s.