

P2RY12 Rabbit Polyclonal Antibody



CAB1710

Product Information

Size:

20uL, 50uL, 100uL, 200uL

Observed MW:

50kDa

Calculated MW:

39kDa

Applications:

WB IF

Reactivity:

Human, Mouse, Rat

Antibody Information

Recommended dilutions:

WB 1:500 - 1:2000 IF 1:50 - 1:200

Source:

Rabbit

Isotype:

IgG

Purification:

Affinity purification

Protein Background

The product of this gene belongs to the family of G-protein coupled receptors. This family has several receptor subtypes with different pharmacological selectivity, which overlaps in some cases, for various adenosine and uridine nucleotides. This receptor is involved in platelet aggregation, and is a potential target for the treatment of thromboembolisms and other clotting disorders. Mutations in this gene are implicated in bleeding disorder, platelet type 8 (BDPLT8). Alternative splicing results in multiple transcript variants of this gene.

Immunogen information

Gene ID:

64805

Uniprot

Q9H244

Synonyms:

P2RY12; ADPG-R; BDPLT8; HORK3; P2T(AC); P2Y(12)R; P2Y(AC); P2Y(ADP); P2Y(cyc); P2Y12; SP1999

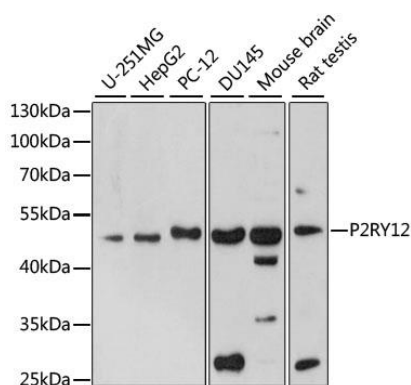
Immunogen:

A synthetic peptide corresponding to a sequence within amino acids 200 to the C-terminus of human P2RY12 (NP_795345.1).

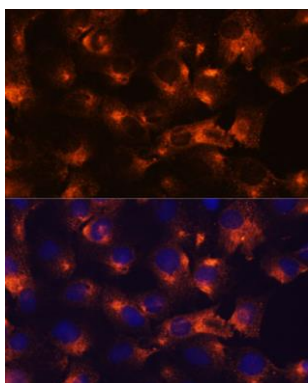
Storage:

Store at -20°C. Avoid freeze / thaw cycles. Buffer: PBS with 0.02% sodium azide, 50% glycerol, pH7.3.

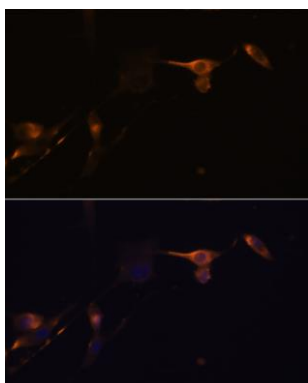
Product Images



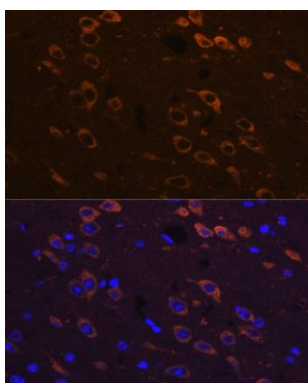
Western blot analysis of extracts of various cell lines, using P2RY12 antibody (CAB1710) at 1:1000 dilution. Secondary antibody: HRP Goat Anti-Rabbit IgG (H+L) (CABS014) at 1:10000 dilution. Lysates/proteins: 25ug per lane. Blocking buffer: 3% nonfat dry milk in TBST. Detection: ECL Basic Kit (CABM00020). Exposure time: 180s.



Immunofluorescence analysis of C6 cells using P2RY12 antibody (CAB1710) at dilution of 1:100. Blue: DAPI for nuclear staining.



Immunofluorescence analysis of U-87MG cells using P2RY12 antibody (CAB1710) at dilution of 1:100. Blue: DAPI for nuclear staining.



Immunofluorescence analysis of mouse brain using P2RY12 antibody (CAB1710) at dilution of 1:100. Blue: DAPI for nuclear staining.