

KANK1 Rabbit Polyclonal Antibody



CAB17106

Product Information

Size:

20uL, 50uL, 100uL, 200uL

Observed MW:

Refer to figures

Calculated MW:

129kDa/147kDa

Applications:

WB IF

Reactivity:

Human, Mouse

Antibody Information

Recommended dilutions:

WB 1:500 - 1:2000 IF 1:50 - 1:200

Source:

Rabbit

Isotype:

IgG

Purification:

Affinity purification

Protein Background

The protein encoded by this gene belongs to the Kank family of proteins, which contain multiple ankyrin repeat domains. This family member functions in cytoskeleton formation by regulating actin polymerization. This gene is a candidate tumor suppressor for renal cell carcinoma. Mutations in this gene cause cerebral palsy spastic quadriplegic type 2, a central nervous system development disorder. A t(5;9) translocation results in fusion of the platelet-derived growth factor receptor beta gene (PDGFRB) on chromosome 5 with this gene in a myeloproliferative neoplasm featuring severe thrombocytopenia. Alternative splicing of this gene results in multiple transcript variants. A related pseudogene has been identified on chromosome 20.

Immunogen information

Gene ID:

23189

Uniprot

Q14678

Synonyms:

KANK1; ANKRD15; CPSQ2; KANK

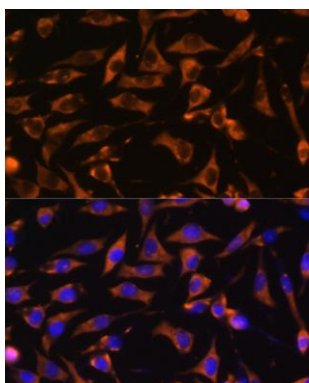
Immunogen:

A synthetic peptide corresponding to a sequence within amino acids 900-1000 of human KANK1 (NP_055973.2).

Storage:

Store at -20°C. Avoid freeze / thaw cycles. Buffer: PBS with 0.02% sodium azide, 50% glycerol, pH7.3.

Product Images



Immunofluorescence - KANK1 Polyclonal Antibody
(CAB17106)