

# ARFIP2 Rabbit Polyclonal Antibody



CAB17119

---

## Product Information

### Size:

20uL, 50uL, 100uL, 200uL

### Observed MW:

Refer to figures

### Calculated MW:

29kDa/33kDa/37kDa

### Applications:

IHC

### Reactivity:

Human

## Antibody Information

### Recommended dilutions:

IHC 1:50 - 1:200

### Source:

Rabbit

### Isotype:

IgG

### Purification:

Affinity purification

## Protein Background

### Immunogen information

#### Gene ID:

23647

#### Uniprot

P53365

#### Synonyms:

ARFIP2; POR1

#### Immunogen:

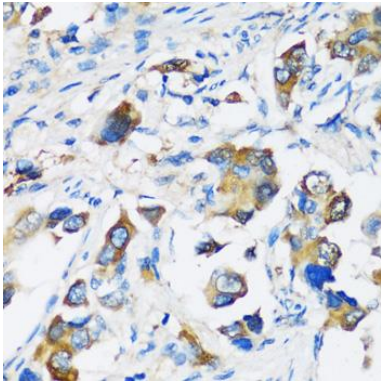
Recombinant fusion protein containing a sequence corresponding to amino acids 1-110 of human ARFIP2 (NP\_036534.1).

#### Storage:

Store at -20°C. Avoid freeze / thaw cycles. Buffer: PBS with 0.02% sodium azide, 50% glycerol, pH7.3.

## Product Images

---



Immunohistochemistry - ARFIP2 Polyclonal Antibody (CAB17119)