

CPSF1 Rabbit Polyclonal Antibody



CAB17144

Product Information

Size:

20uL, 50uL, 100uL, 200uL

Observed MW:

170kDa/185kDa

Calculated MW:

160kDa

Applications:

WB

Reactivity:

Human, Mouse

Protein Background

Cleavage and polyadenylation specificity factor (CPSF) is a multisubunit complex that plays a central role in 3-prime processing of pre-mRNAs. CPSF recognizes the AAUAAA signal in the pre-mRNA and interacts with other proteins to facilitate both RNA cleavage and poly(A) synthesis. CPSF1 is the largest subunit of the CPSF complex (Murthy and Manley, 1995 [PubMed 7590244]).

Immunogen information

Gene ID:

29894

Uniprot

Q10570

Synonyms:

CPSF1; CPSF160; HSU37012; P/cl.18

Antibody Information

Recommended dilutions:

WB 1:500 - 1:2000

Source:

Rabbit

Isotype:

IgG

Purification:

Affinity purification

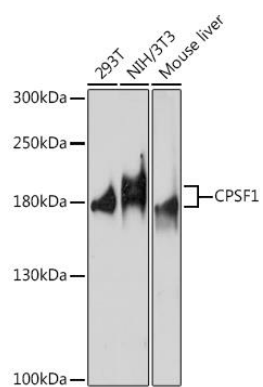
Immunogen:

Recombinant fusion protein containing a sequence corresponding to amino acids 700-950 of human CPSF1 (NP_037423.2).

Storage:

Store at -20°C. Avoid freeze / thaw cycles. Buffer: PBS with 0.02% sodium azide, 50% glycerol, pH7.3.

Product Images



Western blot - CPSF1 Polyclonal Antibody (CAB17144)