

FCF1 Rabbit Polyclonal Antibody



CAB17149

Product Information

Size:

20uL, 50uL, 100uL, 200uL

Observed MW:

23kDa

Calculated MW:

Applications:

WB IHC IF

Reactivity:

Human, Rat

Antibody Information

Recommended dilutions:

WB 1:500 - 1:2000 IHC 1:50
- 1:200 IF 1:50 - 1:200

Source:

Rabbit

Isotype:

IgG

Purification:

Affinity purification

Protein Background

Immunogen information

Gene ID:

51077

Uniprot

Q9Y324

Synonyms:

FCF1; Bka; C14orf111; CGI-35; UTP24

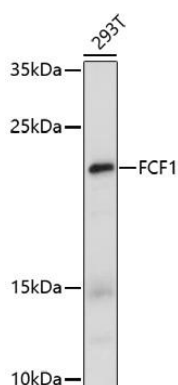
Immunogen:

A synthetic peptide of human FCF1.

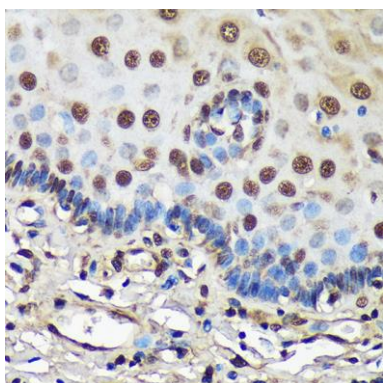
Storage:

Store at -20°C. Avoid freeze / thaw cycles. Buffer: PBS with 0.02% sodium azide, 50% glycerol, pH7.3.

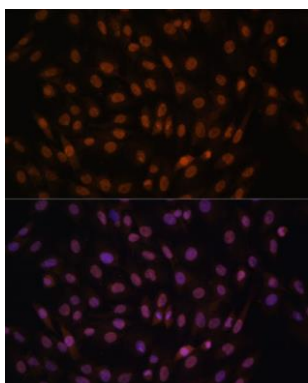
Product Images



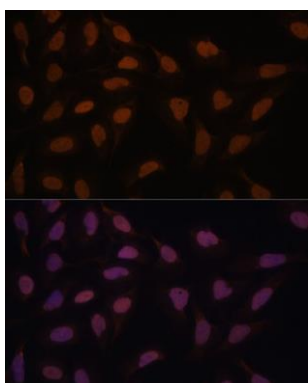
Western blot analysis of extracts of 293T cells, using FCF1 antibody (CAB17149) at 1:1000 dilution. Secondary antibody: HRP Goat Anti-Rabbit IgG (H+L) (CABS014) at 1:10000 dilution. Lysates/proteins: 25ug per lane. Blocking buffer: 3% nonfat dry milk in TBST. Detection: ECL Enhanced Kit (CABM00021). Exposure time: 100s.



Immunohistochemistry of paraffin-embedded Human esophageal using FCF1 Rabbit pAb (CAB17149) at dilution of 1:100 (40x lens).



Immunofluorescence analysis of C6 cells using FCF1 antibody (CAB17149) at dilution of 1:100. Blue: DAPI for nuclear staining.



Immunofluorescence analysis of U-2 OS cells using FCF1 antibody (CAB17149) at dilution of 1:100. Blue: DAPI for nuclear staining.