

IFNAR1 Rabbit Polyclonal Antibody



CAB1715

Product Information

Size:

20uL, 50uL, 100uL, 200uL

Observed MW:

70kDa

Calculated MW:

49kDa/56kDa/63kDa

Applications:

WB IHC

Reactivity:

Human, Mouse, Rat

Protein Background

The protein encoded by this gene is a type I membrane protein that forms one of the two chains of a receptor for interferons alpha and beta. Binding and activation of the receptor stimulates Janus protein kinases, which in turn phosphorylate several proteins, including STAT1 and STAT2. The encoded protein also functions as an antiviral factor.

Immunogen information

Gene ID:

3454

Uniprot

P17181

Synonyms:

IFNAR1; AVP; IFN-alpha-REC; IFNAR; IFNBR; IFRC

Antibody Information

Recommended dilutions:

WB 1:500 - 1:2000 IHC 1:50
- 1:200

Source:

Rabbit

Isotype:

IgG

Purification:

Affinity purification

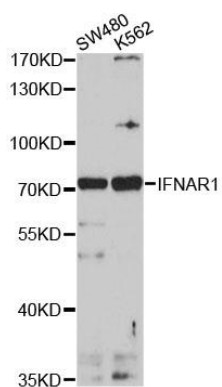
Immunogen:

Recombinant fusion protein containing a sequence corresponding to amino acids 28-290 of human IFNAR1 (NP_000620.2).

Storage:

Store at -20°C. Avoid freeze / thaw cycles. Buffer: PBS with 0.02% sodium azide, 50% glycerol, pH7.3.

Product Images



Western blot analysis of extracts of various cell lines, using IFNAR1 antibody (CAB1715) at 1:1000 dilution. Secondary antibody: HRP Goat Anti-Rabbit IgG (H+L) (CABS014) at 1:10000 dilution. Lysates/proteins: 25ug per lane. Blocking buffer: 3% nonfat dry milk in TBST. Detection: ECL Basic Kit (CABM00020). Exposure time: 90s.