

REEP2 Rabbit Polyclonal Antibody



CAB17152

Product Information

Size:

20uL, 50uL, 100uL, 200uL

Observed MW:

28kDa

Calculated MW:

28kDa

Applications:

WB IF

Reactivity:

Mouse, Rat

Protein Background

This gene encodes a member of the receptor expression enhancing protein family. Studies of a related gene in mouse suggest that the encoded protein is found in the cell membrane and enhances the function of sweet taste receptors. Alternative splicing results in multiple transcript variants.

Immunogen information

Gene ID:

51308

Uniprot

Q9BRK0

Synonyms:

REEP2; C5orf19; SGC32445; SPG72; Yip2d

Antibody Information

Recommended dilutions:

WB 1:500 - 1:2000 IF 1:50 - 1:200

Source:

Rabbit

Isotype:

IgG

Purification:

Affinity purification

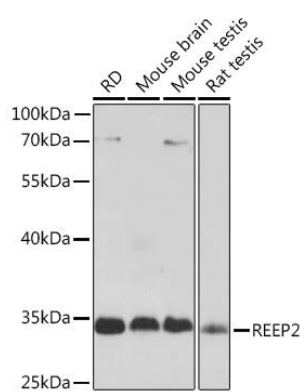
Immunogen:

Recombinant fusion protein containing a sequence corresponding to amino acids 93-252 of human REEP2 (NP_057690.2).

Storage:

Store at -20°C. Avoid freeze / thaw cycles. Buffer: PBS with 0.02% sodium azide, 50% glycerol, pH7.3.

Product Images



Western blot - REEP2 Rabbit pAb (CAB17152)