

# NME8 Rabbit Polyclonal Antibody



CAB17153

## Product Information

### Size:

20uL, 50uL, 100uL, 200uL

### Observed MW:

67kDa

### Calculated MW:

67kDa

### Applications:

WB

### Reactivity:

Human, Mouse

## Protein Background

This gene encodes a protein with an N-terminal thioredoxin domain and three C-terminal nucleoside diphosphate kinase (NDK) domains, but the NDK domains are thought to be catalytically inactive. The sea urchin ortholog of this gene encodes a component of sperm outer dynein arms, and the protein is implicated in ciliary function. Mutations in this gene are implicated in primary ciliary dyskinesia type 6.

## Immunogen information

### Gene ID:

51314

### Uniprot

Q8N427

### Synonyms:

NME8; CILD6; HEL-S-99; NM23-H8; SPTRX2; TXNDC3; sptx-2

## Antibody Information

### Recommended dilutions:

WB 1:500 - 1:2000

### Source:

Rabbit

### Isotype:

IgG

### Purification:

Affinity purification

### Immunogen:

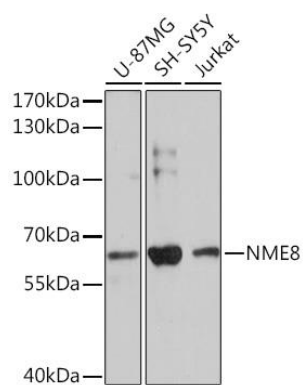
Recombinant fusion protein containing a sequence corresponding to amino acids 299-588 of human NME8 (NP\_057700.3).

### Storage:

Store at -20°C. Avoid freeze / thaw cycles. Buffer: PBS with 0.02% sodium azide, 50% glycerol, pH7.3.

## Product Images

---



Western blot - NME8 Rabbit pAb (CAB17153)