

# ARL6IP4 Rabbit Polyclonal Antibody



CAB17154

## Product Information

### Size:

20uL, 50uL, 100uL, 200uL

### Observed MW:

Refer to figures

### Calculated MW:

25kDa/28kDa/38kDa/42kDa/  
43kDa/44kDa

### Applications:

WB IHC

### Reactivity:

Human

## Antibody Information

### Recommended dilutions:

WB 1:500 - 1:2000 IHC 1:50  
- 1:200

### Source:

Rabbit

### Isotype:

IgG

### Purification:

Affinity purification

## Protein Background

### Immunogen information

#### Gene ID:

51329

#### Uniprot

Q66PJ3

#### Synonyms:

ARL6IP4; SFRS20; SR-25; SRp25; SRp37

#### Immunogen:

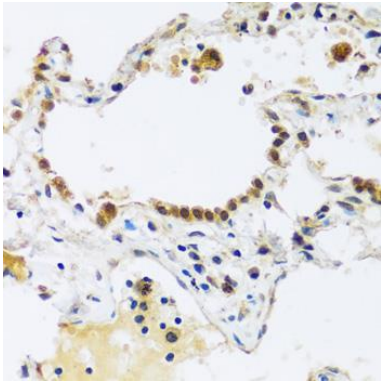
Recombinant fusion protein containing a sequence corresponding to amino acids 313-402 of human ARL6IP4 (NP\_057722.3).

#### Storage:

Store at -20°C. Avoid freeze / thaw cycles. Buffer: PBS with 0.02% sodium azide, 50% glycerol, pH7.3.

## Product Images

---



Immunohistochemistry - ARL6IP4 Polyclonal Antibody (CAB17154)