

PRR16 Rabbit Polyclonal Antibody



CAB17155

Product Information

Size:

20uL, 50uL, 100uL, 200uL

Observed MW:

33kDa

Calculated MW:

Applications:

WB

Reactivity:

Mouse

Antibody Information

Recommended dilutions:

WB 1:500 - 1:2000

Source:

Rabbit

Isotype:

IgG

Purification:

Affinity purification

Protein Background

Immunogen information

Gene ID:

51334

Uniprot

Q569H4

Synonyms:

PRR16; DSC54; LARGEN

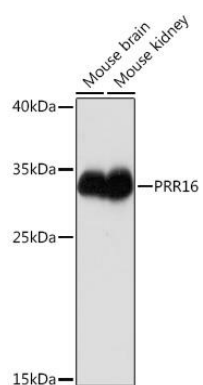
Immunogen:

A synthetic peptide corresponding to a sequence within amino acids 50-150 of human PRR16 (NP_001295016.1).

Storage:

Store at -20°C. Avoid freeze / thaw cycles. Buffer: PBS with 0.02% sodium azide, 50% glycerol, pH7.3.

Product Images



Western blot - PRR16 Rabbit pAb (CAB17155)