

# RAPGEF6 Rabbit Polyclonal Antibody



CAB17161

---

## Product Information

### Size:

20uL, 50uL, 100uL, 200uL

### Observed MW:

179kDa

### Calculated MW:

### Applications:

WB

### Reactivity:

Mouse, Rat

## Antibody Information

### Recommended dilutions:

WB 1:500 - 1:2000

### Source:

Rabbit

### Isotype:

IgG

### Purification:

Affinity purification

## Protein Background

### Immunogen information

#### Gene ID:

51735

#### Uniprot

Q8TEU7

#### Synonyms:

RAPGEF6; KIA001LB; PDZ-GEF2; PDZGEF2; RA-GEF-2; RAGEF2

#### Immunogen:

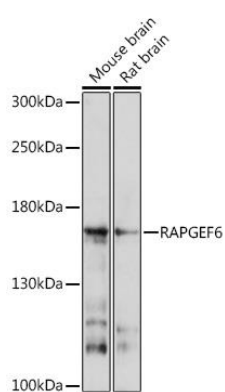
Recombinant fusion protein containing a sequence corresponding to amino acids 145-240 of human RAPGEF6 (NP\_001157858).

#### Storage:

Store at -20°C. Avoid freeze / thaw cycles. Buffer: PBS with 0.02% sodium azide, 50% glycerol, pH7.3.

## Product Images

---



Western blot - RAPGEF6 Rabbit pAb (CAB17161)