

C1 Inactivator Rabbit Polyclonal Antibody



CAB1717

Product Information

Size:

20uL, 50uL, 100uL, 200uL

Observed MW:

60kDa.110kDa

Calculated MW:

49kDa/55kDa

Applications:

WB IF

Reactivity:

Human, Mouse, Rat

Protein Background

This gene encodes a highly glycosylated plasma protein involved in the regulation of the complement cascade. Its protein inhibits activated C1r and C1s of the first complement component and thus regulates complement activation. Deficiency of this protein is associated with hereditary angioneurotic oedema (HANE). Alternative splicing results in multiple transcript variants encoding the same isoform.

Immunogen information

Gene ID:

710

Uniprot

P05155

Synonyms:

SERPING1; C1IN; C1INH; C1NH; HAE1; HAE2

Antibody Information

Recommended dilutions:

WB 1:1000 - 1:2000 IF 1:50
- 1:200

Source:

Rabbit

Isotype:

IgG

Purification:

Affinity purification

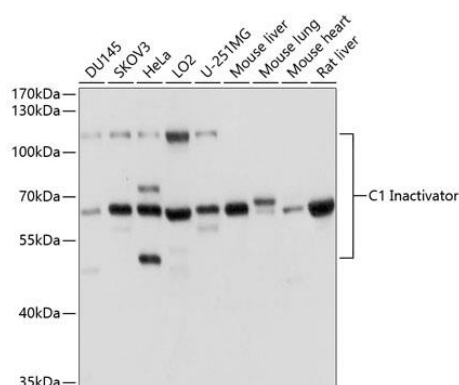
Immunogen:

Recombinant fusion protein containing a sequence corresponding to amino acids 201-500 of human C1 Inactivator (NP_001027466.1).

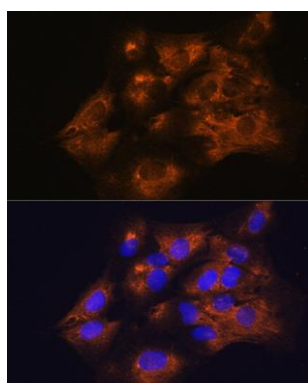
Storage:

Store at -20°C. Avoid freeze / thaw cycles. Buffer: PBS with 0.02% sodium azide, 50% glycerol, pH7.3.

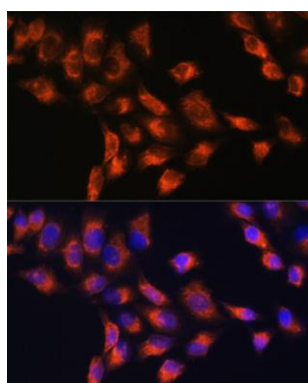
Product Images



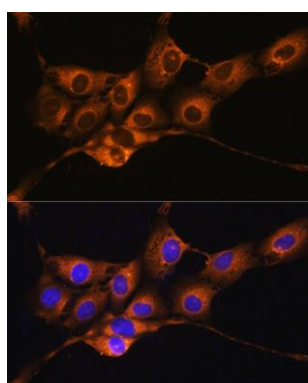
Western blot analysis of extracts of various cell lines, using C1 Inactivator antibody (CAB1717) at 1:1000 dilution. Secondary antibody: HRP Goat Anti-Rabbit IgG (H+L) (CABS014) at 1:10000 dilution. Lysates/proteins: 25ug per lane. Blocking buffer: 3% nonfat dry milk in TBST. Detection: ECL Basic Kit (CABM00020). Exposure time: 3s.



Immunofluorescence analysis of C6 cells using C1 Inactivator antibody (A1717) at dilution of 1:100. Blue: DAPI for nuclear staining.



Immunofluorescence analysis of HeLa cells using C1 Inactivator antibody (A1717) at dilution of 1:100. Blue: DAPI for nuclear staining.



Immunofluorescence analysis of NIH/3T3 cells using C1 Inactivator antibody (A1717) at dilution of 1:100. Blue: DAPI for nuclear staining.