

PINX1 Rabbit Polyclonal Antibody



CAB17172

Product Information

Size:

20uL, 50uL, 100uL, 200uL

Observed MW:

43kDa

Calculated MW:

19kDa/37kDa

Applications:

WB

Reactivity:

Human

Antibody Information

Recommended dilutions:

WB 1:500 - 1:2000

Source:

Rabbit

Isotype:

IgG

Purification:

Affinity purification

Protein Background

Immunogen information

Gene ID:

54984

Uniprot

Q96BK5

Synonyms:

PINX1; LPTL; LPTS

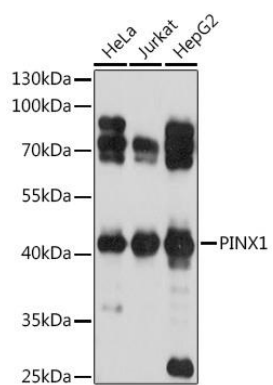
Immunogen:

Recombinant fusion protein containing a sequence corresponding to amino acids 127-328 of human PINX1 (NP_060354.4).

Storage:

Store at -20°C. Avoid freeze / thaw cycles. Buffer: PBS with 0.02% sodium azide, 50% glycerol, pH7.3.

Product Images



Western blot - PINX1 Polyclonal Antibody (CAB17172)