

CHD7 Rabbit Polyclonal Antibody



CAB17180

Product Information

Size:

20uL, 50uL, 100uL, 200uL

Observed MW:

335kDa

Calculated MW:

335kDa

Applications:

WB

Reactivity:

Human

Protein Background

This gene encodes a protein that contains several helicase family domains. Mutations in this gene have been found in some patients with the CHARGE syndrome. Two transcript variants encoding different isoforms have been found for this gene.

Immunogen information

Gene ID:

55636

Uniprot

Q9P2D1

Synonyms:

CHD7; CRG; HH5; IS3; KAL5

Antibody Information

Recommended dilutions:

WB 1:500 - 1:2000

Source:

Rabbit

Isotype:

IgG

Purification:

Affinity purification

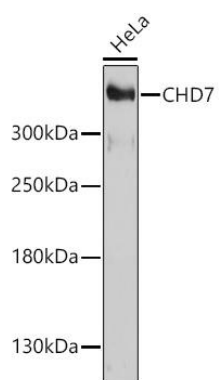
Immunogen:

Recombinant fusion protein containing a sequence corresponding to amino acids 1-300 of human CHD7 (NP_060250.2).

Storage:

Store at -20°C. Avoid freeze / thaw cycles. Buffer: PBS with 0.02% sodium azide, 50% glycerol, pH7.3.

Product Images



Western blot - CHD7 Polyclonal Antibody (CAB17180)