

# EDEM2 Rabbit Polyclonal Antibody



CAB17181

## Product Information

### Size:

20uL, 50uL, 100uL, 200uL

### Observed MW:

70kDa

### Calculated MW:

### Applications:

WB IF

### Reactivity:

Human, Mouse

## Protein Background

In the endoplasmic reticulum (ER), misfolded proteins are retrotranslocated to the cytosol and degraded by the proteasome in a process known as ER-associated degradation (ERAD). EDEM2 belongs to a family of proteins involved in ERAD of glycoproteins (Mast et al., 2005 [PubMed 15537790]).

## Immunogen information

### Gene ID:

55741

### Uniprot

Q9BV94

### Synonyms:

EDEM2; C20orf31; C20orf49; bA4204.1

## Antibody Information

### Recommended dilutions:

WB 1:500 - 1:2000 IF 1:50 - 1:200

### Source:

Rabbit

### Isotype:

IgG

### Purification:

Affinity purification

### Immunogen:

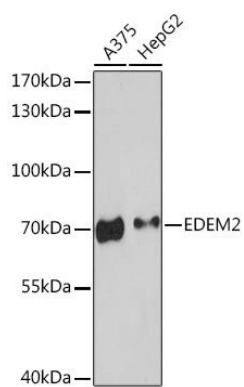
Recombinant fusion protein containing a sequence corresponding to amino acids 399-578 of human EDEM2 (NP\_060687.2).

### Storage:

Store at -20°C. Avoid freeze / thaw cycles. Buffer: PBS with 0.02% sodium azide, 50% glycerol, pH7.3.

## Product Images

---



Western blot - EDEM2 Rabbit pAb (CAB17181)