

# BRK1 Rabbit Polyclonal Antibody



CAB17182

## Product Information

### Size:

20uL, 50uL, 100uL, 200uL

### Observed MW:

Refer to figures

### Calculated MW:

### Applications:

IHC IF

### Reactivity:

Human, Mouse

## Antibody Information

### Recommended dilutions:

IHC 1:50 - 1:200 IF 1:50 - 1:200

### Source:

Rabbit

### Isotype:

IgG

### Purification:

Affinity purification

## Protein Background

### Immunogen information

#### Gene ID:

55845

#### Uniprot

Q8WUW1

#### Synonyms:

BRK1; C3orf10; HSPC300; MDS027; hHBrk1

#### Immunogen:

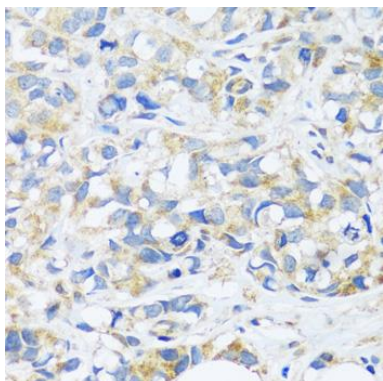
Recombinant fusion protein containing a sequence corresponding to amino acids 1-75 of human BRK1 (NP\_060932.2).

#### Storage:

Store at -20°C. Avoid freeze / thaw cycles. Buffer: PBS with 0.02% sodium azide, 50% glycerol, pH7.3.

## Product Images

---



Immunohistochemistry - BRK1 Polyclonal Antibody (CAB17182)