

SLC17A7 Rabbit Polyclonal Antibody



CAB17188

Product Information

Size:

20uL, 50uL, 100uL, 200uL

Observed MW:

Refer to figures

Calculated MW:

53kDa/59kDa/61kDa

Applications:

WB IF

Reactivity:

Mouse, Rat

Protein Background

The protein encoded by this gene is a vesicle-bound, sodium-dependent phosphate transporter that is specifically expressed in the neuron-rich regions of the brain. It is preferentially associated with the membranes of synaptic vesicles and functions in glutamate transport. The protein shares 82% identity with the differentiation-associated Na-dependent inorganic phosphate cotransporter and they appear to form a distinct class within the Na⁺/Pi cotransporter family.

Immunogen information

Gene ID:

57030

Uniprot

Q9P2U7

Synonyms:

SLC17A7; BNPI; VGLUT1

Antibody Information

Recommended dilutions:

WB 1:500 - 1:2000 IF 1:50 - 1:200

Source:

Rabbit

Isotype:

IgG

Purification:

Affinity purification

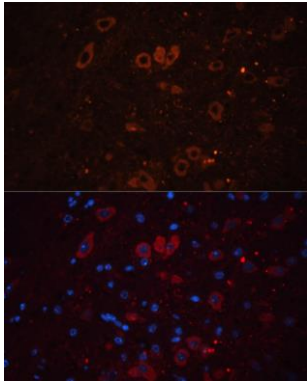
Immunogen:

Recombinant fusion protein containing a sequence corresponding to amino acids 461-560 of human SLC17A7 (NP_064705.1).

Storage:

Store at -20°C. Avoid freeze / thaw cycles. Buffer: PBS with 0.02% sodium azide, 50% glycerol, pH7.3.

Product Images



Immunofluorescence analysis of mouse brain using SLC17A7 antibody (CAB17188) at dilution of 1:100. Blue: DAPI for nuclear staining.